

NOTES: UNLESS OTHERWISE SPECIFIED

1. INTERFACE COMPLIANT TO SMPTE 304 SPECIFICATION.

2. MATERIAL SPECIFICATIONS:

CONTACTS: COPPER ALLOY  
 CRIMP SLEEVE: PHOS. BRONZE  
 O-RING: SILICONE RUBBER  
 SHIELD GROUND: 303 STAINLESS STEEL PER ASTM A582

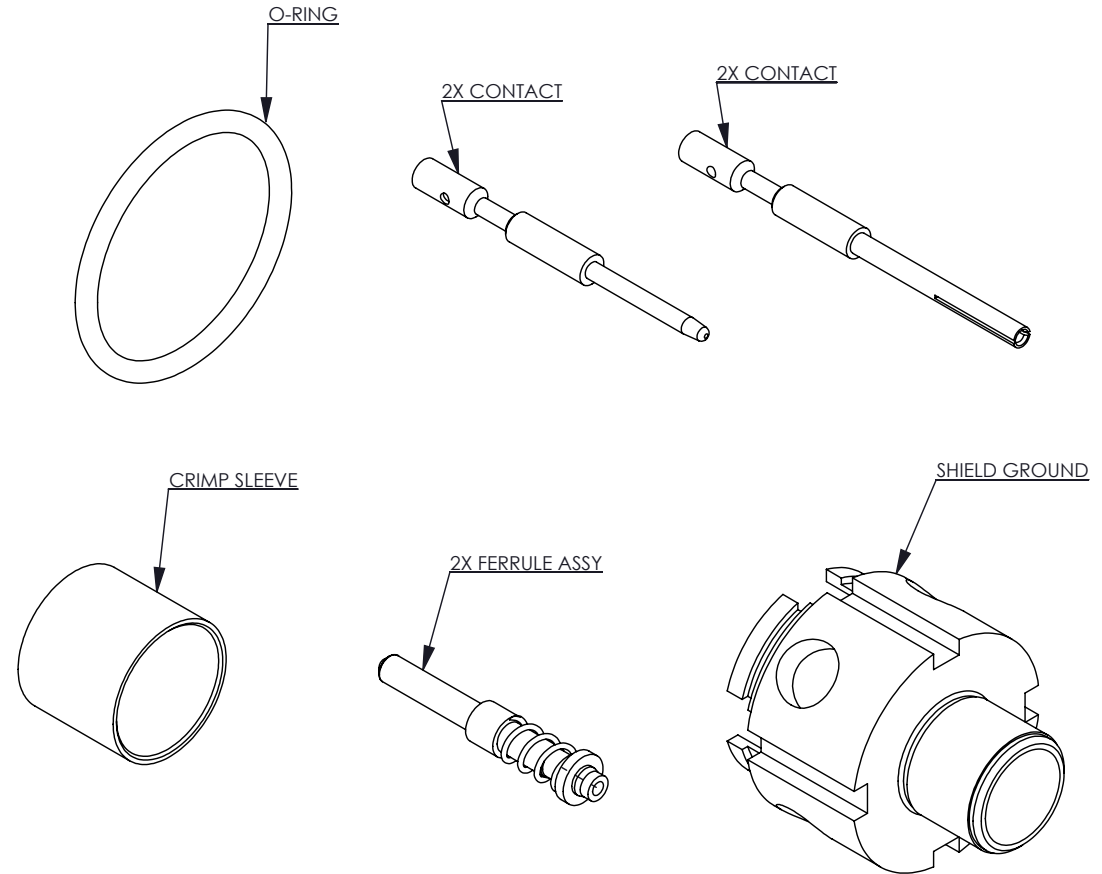
3. FINISH SPECIFICATIONS:

STAINLESS STEEL PARTS: PASSIVATE  
 CONTACTS: .000100 MIN GOLD PER ASTM B488 OVER  
 .000080 MIN NICKEL PER AMS-QQN-290 (RoHS)  
 CRIMP SLEEVE: .000100 MIN NICKEL PER AMS-QQ-N-290 OVER  
 COPPER FLASH PER ASTM B734 (RoHS)

4. REPLACEMENT KIT FOR ASSEMBLY: 7765-3-3

5. USE CABLE ASSEMBLY PROCEDURE CAP-E05

REV	DESCRIPTION	BY DATE	APPD
A	RELEASED PER ER22697	PSM 04/08/09	WPM



CATALOG P/N: 7760-000-00701Z

PER ASME Y14.5M-1994 UNLESS OTHERWISE SPECIFIED: DIMENSIONS ARE IN INCHES [MM] TOLERANCES: DECIMAL: .XX [X.X] ± .01 [0.3] .XXX [X.XX] ± .005 [0.13] .XXXX [X.XXX] ± .XXXX ANGLES: ± 2° SCALE: 2:1		<b>Kings Win</b> Winchester Interconnect 199 Park Road Extension Middlebury, Connecticut 06762	
CUSTOMER SALES DRAWING		KIT - CONTACT	
DRAWN	DATE	APPROVED	DATE
PSM	03/30/09	WPM	08/17/09
APPROVED	DATE	APPROVED	DATE
RL	08/17/09	JF	08/17/09
THIRD ANGLE		A	
SD7760-000-00701Z		SHT OF 1 1	REV A

NOTES: UNLESS OTHERWISE SPECIFIED  
 1. INTERFACE COMPLIANT TO SMPTE 304 SPECIFICATION.

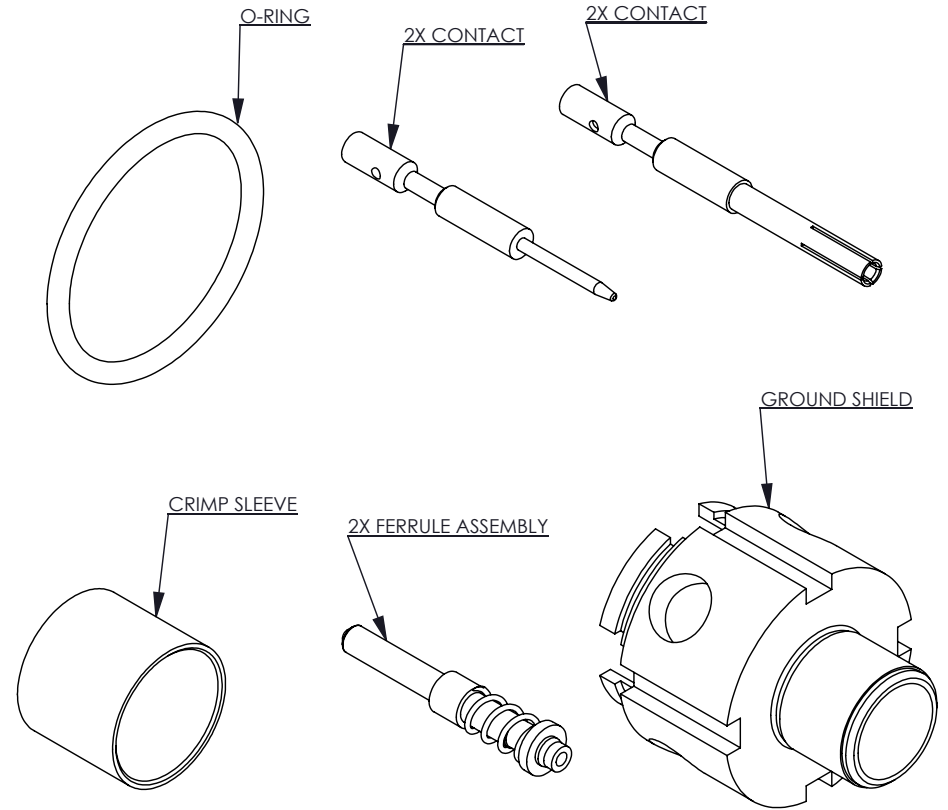
2. MATERIAL SPECIFICATIONS:  
 CONTACTS: COPPER ALLOY  
 CRIMP SLEEVE: PHOS. BRONZE  
 O-RING: SILICONE RUBBER  
 SHIELD GROUND: 303 STAINLESS STEEL PER ASTM A582

3. FINISH SPECIFICATIONS:  
 STAINLESS STEEL PARTS: PASSIVATE  
 CONTACTS: .000100 MIN GOLD PER ASTM B488 OVER  
 .000080 MIN NICKEL PER AMS-QQN-290 (RoHS)  
 CRIMP SLEEVE: .000100 MIN NICKEL PER AMS-QQ-N-290 OVER  
 COPPER FLASH PER ASTM B734 (RoHS)

4. REPLACEMENT KIT FOR ASSEMBLY: 7763-3-3

5. CABLE ASSEMBLY PROCEDURE CAP-E05

REV	DESCRIPTION	BY DATE	APPD
A	RELEASED PER ER22697	PSM 04/08/09	WPM



CATALOG P/N: 7760-000-00702Z

PER ASME Y14.5M-1994 UNLESS OTHERWISE SPECIFIED: DIMENSIONS ARE IN INCHES [MM] TOLERANCES: DECIMAL: .XX [X.X] ± .01 [0.3] .XXX [X.XX] ± .005 [0.13] .XXXX [X.XXX] ± .XXXX ANGLES: ± 2° SCALE: 2:1		 Winchester Interconnect 199 Park Road Extension Middlebury, Connecticut 06762	
<b>CUSTOMER SALES DRAWING</b>		<b>KIT - CONTACT</b>	
DRAWN	DATE	APPROVED	DATE
PSM	03/30/09	WPM	08/17/09
APPROVED	DATE	APPROVED	DATE
RL	08/17/09	JF	08/17/09
<b>A</b>		SD7760-000-00702Z	SHT OF REV 1 1 A

NOTES: UNLESS OTHERWISE SPECIFIED  
 1. INTERFACE COMPLIANT TO SMPTE 304 SPECIFICATION.

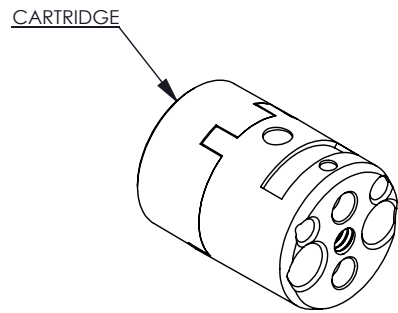
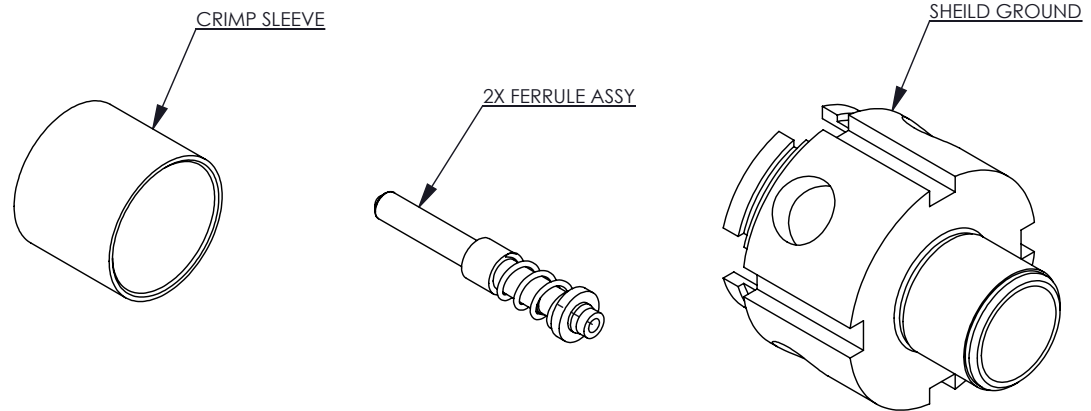
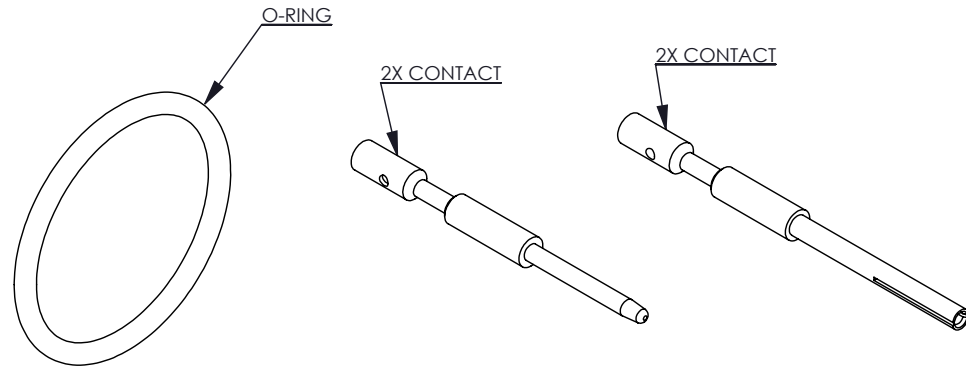
2. MATERIAL SPECIFICATIONS:  
 CONTACTS: COPPER ALLOY  
 CRIMP SLEEVE: PHOS. BRONZE  
 O-RING: SILICONE RUBBER  
 SHEILD GROUND: 303 STAINLESS STEEL PER ASTM A582

3. FINISH SPECIFICATIONS:  
 STAINLESS STEEL PARTS: PASSIVATE  
 CONTACTS: .000100 MIN GOLD PER ASTM B488 OVER  
 .000080 MIN NICKEL PER AMS-QQN-290 (RoHS)  
 CRIMP SLEEVE: .000100 MIN NICKEL PER AMS-QQ-N-290 OVER  
 COPPER FLASH PER ASTM B734 (RoHS)

4. REPLACEMENT KIT FOR ASSEMBLY: 7765-3-3

5. CABLE ASSEMBLY PROCEDURE CAP-E05.

REV	DESCRIPTION	BY DATE	APPD
A	RELEASED PER ER22697	PSM 04/08/10	WPM



CATALOG P/N: 7760-000-00703Z

PER ASME Y14.5M-1994 UNLESS OTHERWISE SPECIFIED: DIMENSIONS ARE IN INCHES [MM] TOLERANCES: DECIMAL: .XX [X.X] ± .01 [0.3] .XXX [X.XX] ± .005 [0.13] .XXXX [X.XXX] ± .XXXX ANGLES: ± 2° SCALE: 2:1			
<b>CUSTOMER SALES DRAWING</b>		THIRD ANGLE	
DRAWN	DATE	APPROVED	DATE
PSM	03/30/09	WPM	08/17/09
APPROVED	DATE	APPROVED	DATE
RL	08/17/09	JF	08/17/09

**Kings Win**  
 Winchester Interconnect  
 199 Park Road Extension  
 Middlebury, Connecticut 06762

KIT - CONTACT WITH CARTRIDGE

<b>A</b>	SD7760-000-00703Z	SHT	OF	REV
		1	1	A

NOTES: UNLESS OTHERWISE SPECIFIED  
 1. INTERFACE COMPLIANT TO SMPTE 304 SPECIFICATION

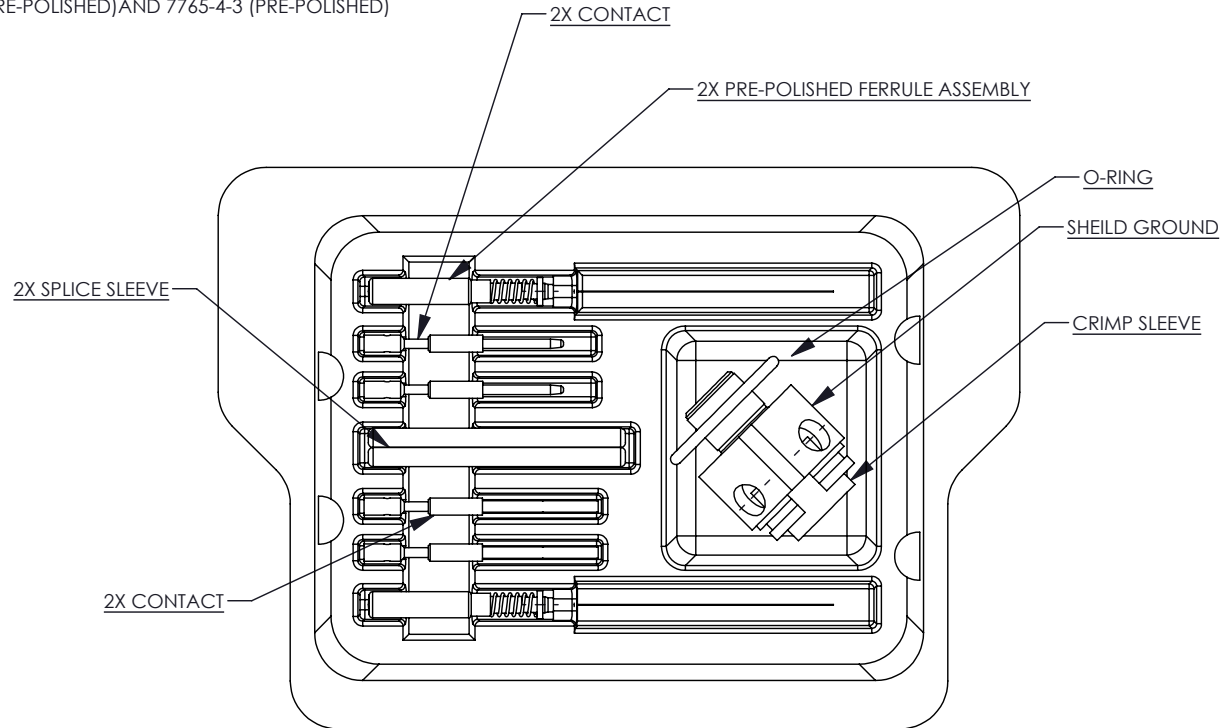
2. MATERIAL SPECIFICATIONS:  
 CONTACTS: COPPER ALLOY  
 CRIMP SLEEVE: PHOS. BRONZE  
 O-RING: SILICONE RUBBER  
 SHIELD GROUND: 303 STAINLESS STEEL PER ASTM A582.

3. FINISH SPECIFICATIONS:  
 CONTACTS: .000100 MIN GOLD PER ASTM B488 OVER  
 .000080 MIN NICKEL PER AMS-QQ-N-290  
 CRIMP SLEEVE: .000100 MIN NICKEL PER AMS-QQ-N-290 OVER  
 COPPER FLASH PER ASTM B734.

4. REPLACEMENT KIT FOR ASSEMBLIES: 7765-3-3 (NOT PRE-POLISHED) AND 7765-4-3 (PRE-POLISHED)

5. USE CABLE ASSEMBLY PROCEDURE: CAP-E05.

REV	DESCRIPTION	BY DATE	APPD
03	PRELIMINARY DRAWING ER22701	JCF 04/28/10	XX



CATALOG P/N: 7760-000-00708Z

PER ASME Y14.5M-1994 UNLESS OTHERWISE SPECIFIED: DIMENSIONS ARE IN INCHES [MM] TOLERANCES: DECIMAL: .XX [X.X] ± .01 [0.3] .XXX [X.XX] ± .005 [0.13] .XXXX [X.XXX] ± .XXXX ANGLES: ± 2° SCALE: 1:1				 Winchester Interconnect 199 Park Road Extension Middlebury, Connecticut 06762	
<b>CUSTOMER SALES DRAWING</b>				THIRD ANGLE 	
DRAWN DATE PSM 04/21/10		APPROVED DATE JCF 04/23/10		<b>KIT-CONTACT          W/ PRE-POLISHED FIBER          FOR FIBER OPTIC CAMERA PLUG</b>	
APPROVED DATE IP 04/23/10		APPROVED DATE PP 04/23/10			
<b>A</b>				SD7760-000-00708Z	SHT OF REV 1 1 03

NOTES: UNLESS OTHERWISE SPECIFIED  
 1. INTERFACE COMPLIANT TO SMPTE 304 SPECIFICATION

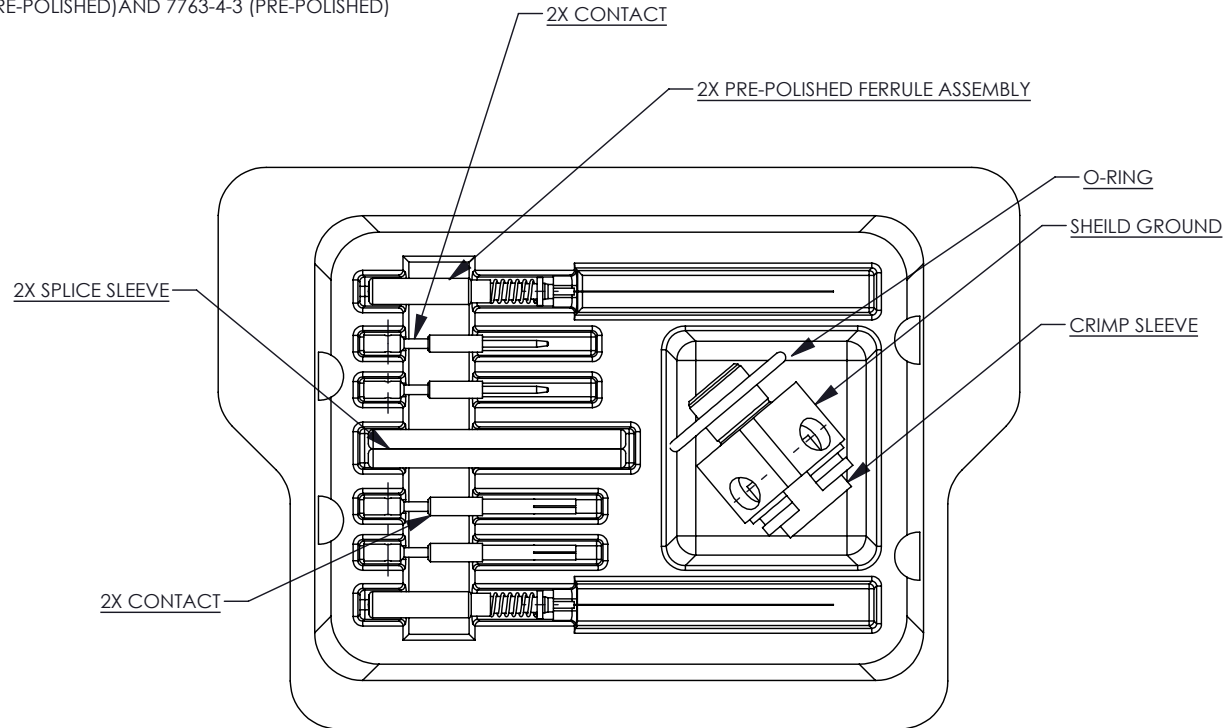
2. MATERIAL SPECIFICATIONS:  
 CONTACTS: COPPER ALLOY  
 CRIMP SLEEVE: PHOS. BRONZE  
 O-RING: SILICONE RUBBER  
 SHIELD GROUND: 303 STAINLESS STEEL PER ASTM A582.

3. FINISH SPECIFICATIONS:  
 CONTACTS: .000100 MIN GOLD PER ASTM B488 OVER  
 .000080 MIN NICKEL PER AMS-QQ-N-290  
 CRIMP SLEEVE: .000100 MIN NICKEL PER AMS-QQ-N-290 OVER  
 COPPER FLASH PER ASTM B734.

4. REPLACEMENT KIT FOR ASSEMBLIES: 7763-3-3 (NOT PRE-POLISHED) AND 7763-4-3 (PRE-POLISHED)

5. USE CABLE ASSEMBLY PROCEDURE: CAP-E05.

REV	DESCRIPTION	BY DATE	APPD
03	REVISED DRAWING ER23620	01/08/90 JCF	XXX



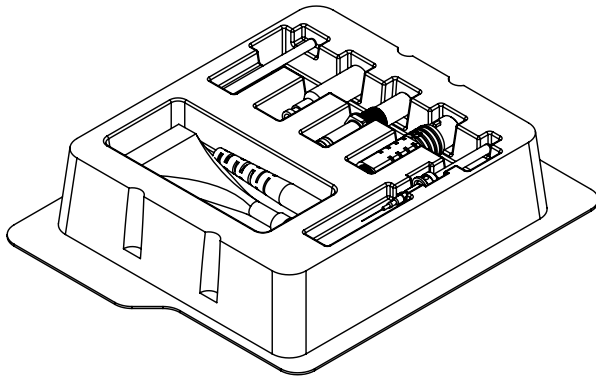
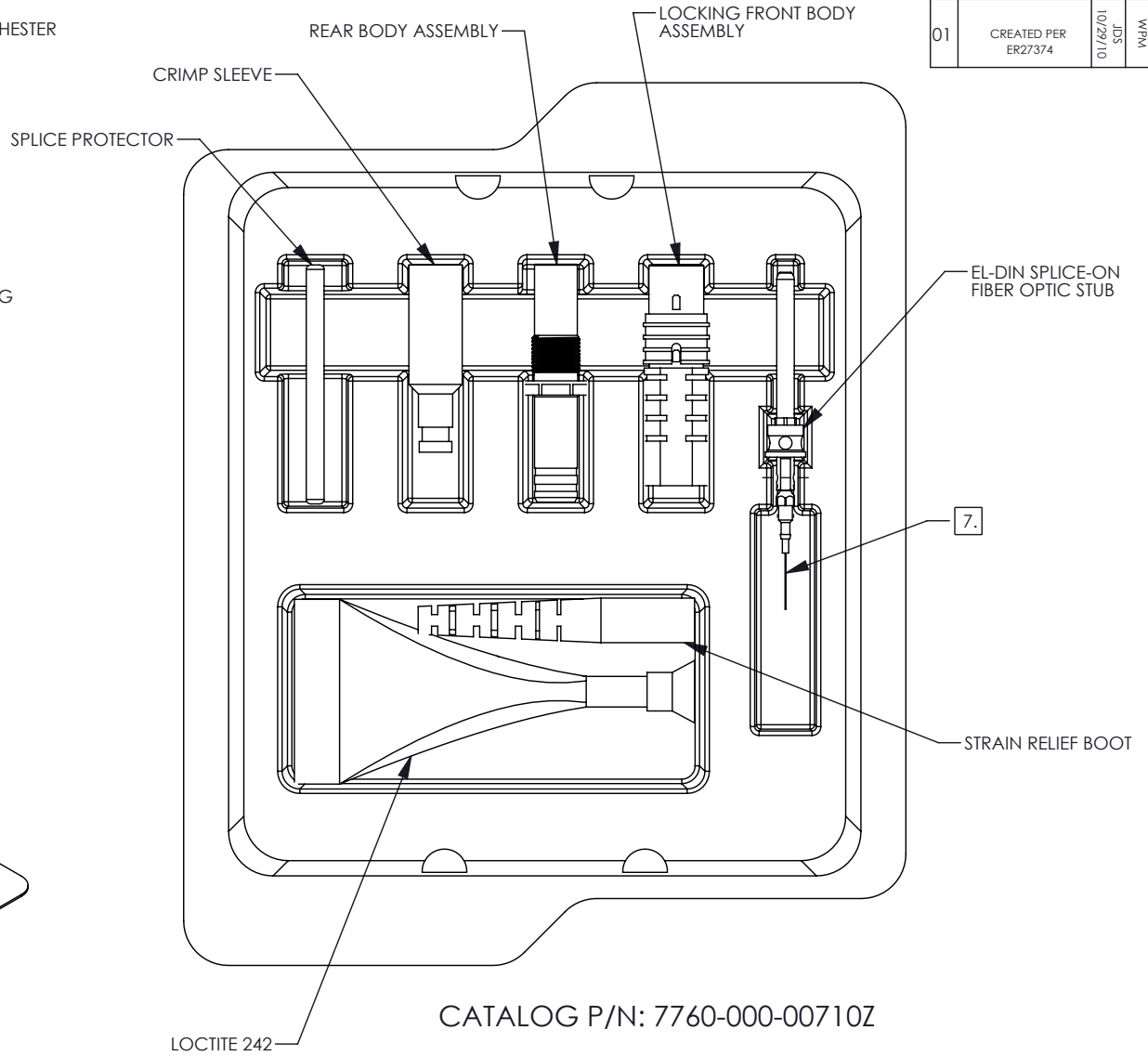
CATALOG P/N: 7760-000-00709Z

PER ASME Y14.5M-1994 UNLESS OTHERWISE SPECIFIED: DIMENSIONS ARE IN INCHES [MM] TOLERANCES: DECIMAL: .XX [X.X] ± .01 [0.3] .XXX [X.XX] ± .005 [0.13] .XXXX [X.XXX] ± .XXXX ANGLES: ± 2° SCALE: 1:1				<b>Kings Win</b> Winchester Interconnect 199 Park Road Extension Middlebury, Connecticut 06762	
<b>CUSTOMER SALES DRAWING</b>				THIRD ANGLE 	
DRAWN	DATE	APPROVED	DATE	<b>A</b> SD7760-000-00709Z SHT OF REV 1 1 03	
PSM	04/21/10	JCF	04/23/10		
APPROVED	DATE	APPROVED	DATE		
IP	04/23/10	PP	04/23/10		

NOTES: UNLESS OTHERWISE SPECIFIED

1. THIS KIT TO BE USED TO TERMINATE EL-SERIES DIN CONNECTORS TO EQUIPMENT SIDE PATCH CABLES FOR USE WITH KINGS BY WINCHESTER FIBER OPTIC VIDEO JACK
2. MATERIAL SPECIFICATIONS:  
 CRIMP SLEEVE: BRASS PER ASTM B16  
 CONNECTOR BODY PARTS: BRASS PER ASTM B16  
 RING: BERYLLIUM COPPER UNS C17300
3. FINISH SPECIFICATIONS:  
 CONNECTOR BODY: NICKEL PLATED  
 CRIMP SLEEVE: NICKEL PLATED
4. USE CABLE ASSEMBLY PROCEDURE: TBD
5. USE KINGS TOOL KTH-5000 AND CRIMP DIE KTH-5003 FOR CRIMPING
6. DO NOT TOUCH BARE FIBER

REV	DESCRIPTION	BY DATE	APPD
01	CREATED PER ER27374	JDS 10/29/10	WPM



SHOWN WITHOUT COVER

CATALOG P/N: 7760-000-00710Z

PER ASME Y14.5M-1994  
 UNLESS OTHERWISE SPECIFIED:  
 DIMENSIONS ARE IN INCHES [MM]  
 TOLERANCES:  
 DECIMAL: .XX [X.X] ± .01 [0.3]  
 .XXX [X.XX] ± .005 [0.13]  
 .XXXX [X.XXX] ± .XXXX  
 ANGLES: ± 2° SCALE: X:X

**Kings Win**  
 Winchester Interconnect  
 199 Park Road Extension  
 Middlebury, Connecticut 06762

CUSTOMER SALES DRAWING



DRAWN	DATE	APPROVED	DATE
JDS	10/29/10	WPM	10/29/10
APPROVED	DATE	APPROVED	DATE
JCF	10/29/10	MZ	10/29/10

WINCHESTER FIBER OPTIC EL-DIN SPLICE-ON KIT

<b>A</b>	SD7760-000-00710Z	SHT	OF	REV
		1	1	01

