

EL Series

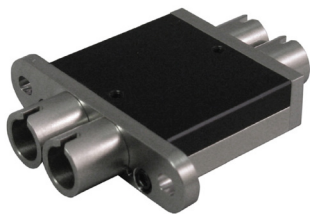
Optical Fiber Video Jacks



The KINGS-Win® EL Series™ Fiber Optic Video Jack is the heart of an innovative fiber optic patching system. It is the only optical fiber interconnect that offers both front and rear expanded beam connectors.

The EL (Expanded Light) connection eliminates cleaning and allows thousands of mating cycles. With front and rear beam connections, equipment side cables are secured in the rear and patching is achieved on the front using expanded beam patch cables. This dual ended setup allows the user to avoid disrupting the rear connections. Straight through jacks are also available should the application require them. The small form factor of the EL Series Fiber optic Jack allows easy integration into existing patch bays for a seamless copper and fiber installation. Special racks are not required for fiber optic interconnection.

The EL Series™ Video Jack system can be used as a “manual router,” which can reduce optical to electrical conversion costs by up to 95%. Additionally, patching through a single optical to electrical converter can be done live without any concern for fiber cleanliness or operator handling issues.



- Equipment side cables stay connected during patching
- Provides high density fiber without cable management issues
- Removal tool available for reconfiguration

- No electrical connections
- No cleaning of fiber optic connectors
- Rated to thousands of cycles
- High optical return loss
- Insertion loss remains constant without cleaning

 **Winchester**
Interconnect.

We Energize Innovation.

Specifications

Optical

Insertion Loss normal

1.5 dB Typical

Insertion Loss patched

1.5 dB Typical

Return Loss

55 dB Typical

45 dB Maximum

Mechanical

Patch Cord Mates

2000 min, 5000 typical

Withdrawal Force (patch)

5lb min.

Pull Force (Rear Side)

20lb min.

Body

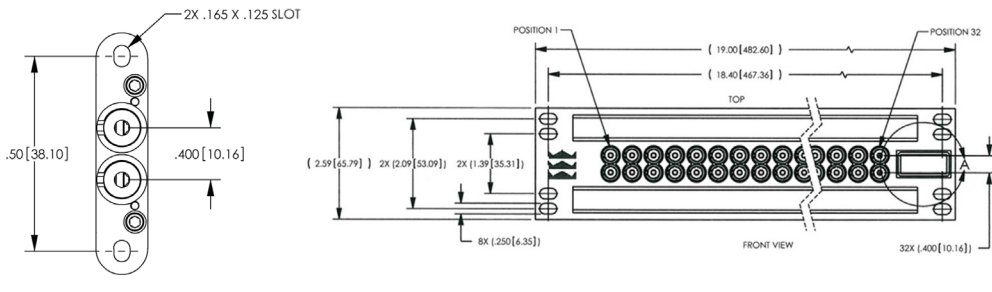
Material

High Strength

Stainless Steel

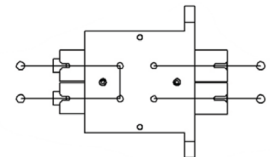
Part Numbering – Video Jacks

Description	Part Number
Optical Jack – Normal	776G-009-00701N
Jackfield 32 Position w/32 – Normal	7767-776-00005N
Jackfield 32 Position w/16 – Normal	7767-776-00006N
Jackfield 24 Position w/24 – Normal	7769-776-00003Z
Optical Jack – Non-Normal	7769-776-00002Z
Jackfield 32 Position w/32 – Non-Normal	7769-776-00001Z
Jackfield 32 Position w/8 – Non-Normal	7769-776-00004Z

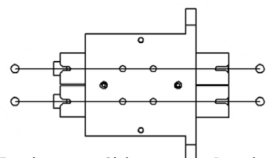


Optical Connection Diagram


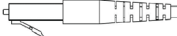




Normal Connection – No Patchcord



Patched Connection – Patchcord Inserted



Part Numbering – Patch Cords

Description	Part Number
 DIN-SC Fiber Optic Cable Assembly (3M)	776G-009-00701N
 DIN-LC Fiber Optic Cable Assembly (3M)	7767-776-00005N
 DIN-FC SM Fiber Optic Cable Assembly (3M)	7767-776-00006N
 DIN-ST Fiber Optic Cable Assembly (3M)	7769-776-00003Z
 Singlemode EL to EL Patch Cable w/5mm 9/125 Blue Cable (3M)	7769-776-00002Z
 EL DIN™ Removal Tool	7769-776-00001Z