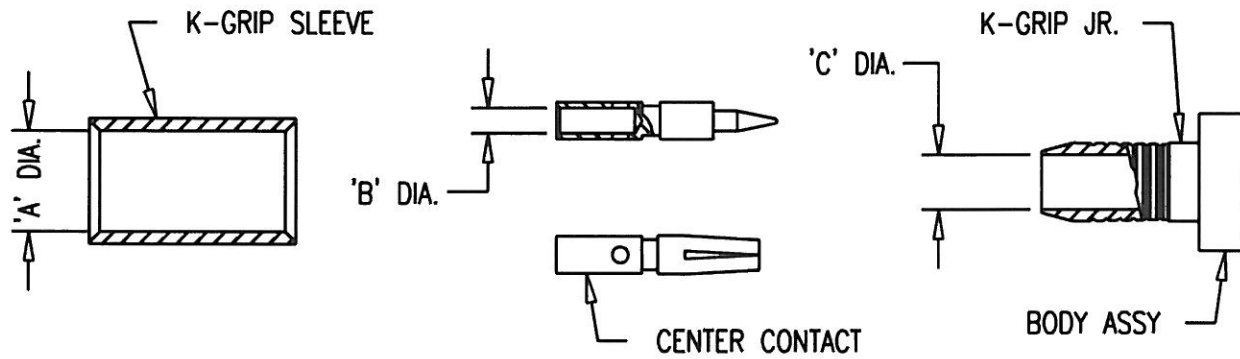


(OVER)



KINGS ELECTRONICS CO., INC., TUCKAHOE, NEW YORK

3-610



MILITARY PART NO.	KINGS PART NO.	PIECE PART DIM'S			SLEEVE (CRIMP TOOL M22520/5-01)	EQUIV. KINGS DIE SIZE *
		A	B	C	DIE SIZE M22520/5-25	
M39012/01-0017	1205-68-5	.420	.092	.297	CLOSURE A	KTH-2004
M39012/01-0018	1205-69-5	.440				

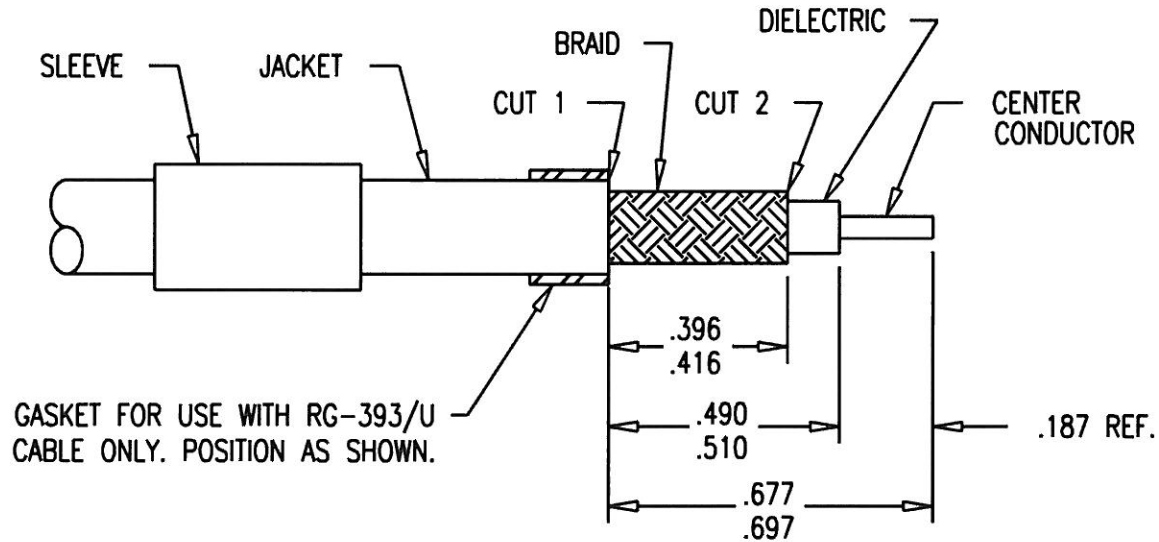
* FOR USE WITH KINGS CRIMP TOOL KTH-1000

REDUCE TO 2 1/2 IN. X 3 IN.

- NOTES:
1. INSTRUCTION SHEET TO BE WHITE SULPHUR FREE PAPER.
 2. PRINT SHEETS 1 AND 2 ON BOTH SIDES OF SAME SHEET.

USED ON: SEE TABLE			DRAWN MJB	DATE 12/07/94	REVISIONS	CABLING INSTRUCTIONS
PLOT SCALE: 1:1			APPR.	DATE	ISSUE CHANGES	
DASH NO.	M CODE	MADE FROM				
-1	M88	PERFORATED STRIP ON ROLL				
-2	M88	INDIVIDUAL, CUT SHEETS				
					3-610 (SHEET 1 OF 2)	


(OVER)



1. CUT CABLE END SQUARE. SLIDE K-GRIP SLEEVE OVER JACKET & MAKE CUTS 1 & 2 THROUGH JACKET ONLY.
2. REMOVE END OF JACKET UP TO CUT 2, FLARE OR BULGE BACK BRAID & TRIM WITH SCISSORS AT EDGE OF JACKET.
3. REMOVE JACKET BETWEEN CUTS 1 & 2 EXPOSING $.406 \pm .010$ LENGTH OF BRAID.
4. TRIM DIELECTRIC TO $.500 \pm .010$ DIM., EXPOSED CENTER CONDUCTOR WILL BE $.187$ REF.
5. PLACE CENTER CONTACT ON CABLE AGAINST DIELECTRIC & CRIMP OR SOLDER IN PLACE.
6. PUSH K-GRIP JR. OVER DIELECTRIC AND UNDER BRAID UNTIL DIELECTRIC BOTTOMS IN CONNECTOR.
7. SLIDE K-GRIP SLEEVE OVER K-GRIP & BRAID TO SHOULDER OF BODY ASSY & FORM HEX USING APPLICABLE CRIMP TOOL & DIE.

REDUCE TO 2 1/2 IN. X 3 IN.

NOTES:
 1. INSTRUCTION SHEET TO BE WHITE SULPHUR FREE PAPER.
 2. PRINT SHEETS 1 AND 2 ON BOTH SIDES OF SAME SHEET.

USED ON: SEE TABLE			DRAWN MJB	DATE 12/07/94	REVISIONS		CABLING INSTRUCTIONS
PLOT SCALE: 1:1			APPR.	DATE	ISSUE	CHANGES	
DASH NO.	M CODE	MADE FROM			 KINGS ELECTRONICS CO., INC. TUCKAHOE, NEW YORK 10707		
-1	M88	PERFORATED STRIP ON ROLL					
-2	M88	INDIVIDUAL, CUT SHEETS					
					3-610 (SHEET 2 OF 2)		