
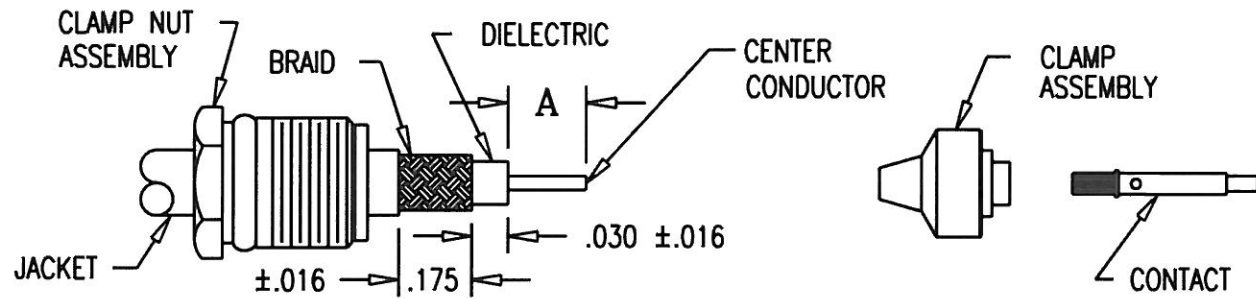


(OVER)


**KINGS ELECTRONICS CO., INC., TUCKAHOE, NEW YORK**

3-559




MILITARY PART NO. M39012/	KINGS PART NO.	CABLE PART NO. M17/	A DIM ±.016
55-3006	875-83-17	93-RG178	.220
55-3106	875-83-3	169-00001	
56-3006	876-65-17		
56-3106	876-65-3		
57-3006	873-45-3		
58-3006	871-53-3		
59-3006	872-42-3		
55-3007	875-81-17	119-RG174	.220
55-3107	875-81-3	173-00001	
56-3007	876-60-17	113-RG316	
56-3107	876-60-3	172-00001	
57-3007	873-46-3		
58-3007	871-52-3		
59-3007	872-43-3		
55-3008	875-84-17	54-RG122	.220
55-3108	875-84-3	157-00001	
56-3008	876-66-17		
56-3108	876-66-3		
57-3008	873-47-3		
58-3008	871-54-3		
59-3008	872-44-3		


REDUCE TO 2 1/2 IN. X 3 IN.

NOTES:  
 1. INSTRUCTION SHEET TO BE WHITE SULPHUR FREE PAPER.  
 2. PRINT SHEETS 1 AND 2 ON BOTH SIDES OF SAME SHEET.

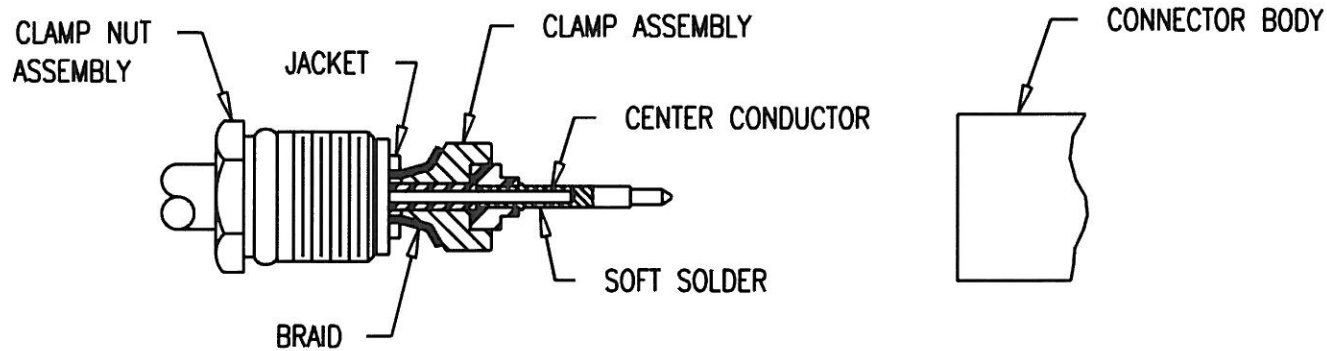
DET1073

USED ON: SEE TABLE			DRAWN MJB	DATE 09/14/92	REVISIONS		CABLING INSTRUCTIONS
PLOT SCALE: 1:1			APPR.	DATE	ISSUE	CHANGES	
DASH NO.	M CODE	MADE FROM			1	CN 34352 E JCA 12/11/92	 <b>KINGS</b> ELECTRONICS CO., INC. TUCKAHOE, NEW YORK 10707
-1	M88	INDIVIDUAL, CUT SHEETS			2	CN 34620 C MJB 05/04/93	
-2	M88	PERFORATED STRIP ON ROLL					3-559 (SHEET 1 OF 2)

(OVER)

 KINGS ELECTRONICS CO., INC., TUCKAHOE, NEW YORK

3-559




1. CUT CABLE END SQUARE. SLIDE CLAMP NUT OVER JACKET & TRIM CABLE TO DIM'S SHOWN.
2. INSERT CLAMP ASSEMBLY BETWEEN DIELECTRIC & BRAID UNTIL DIELECTRIC BOTTOMS IN ASSEMBLY AND CENTER CONDUCTOR IS VISIBLE. PRESS CONTACT INTO INSULATOR UNTIL BOTTOMED AND CENTER CONDUCTOR IS VISIBLE THROUGH CONTACT SOLDER HOLE. SOLDER CENTER CONDUCTOR.
3. INSERT CABLE ASSEMBLY INTO CONNECTOR BODY, SLIDE CLAMP ASSEMBLY FORWARD UNTIL SEATED AND TIGHTEN CLAMP NUT TO A TORQUE OF 30 INCH/LBS. WHEN TIGHTENING THE CLAMP NUT ASSEMBLY MAKE SURE ONLY THE NUT TURNS, DO NOT ROTATE BODY, DAMAGE TO THE CENTER CONDUCTOR MIGHT OCCUR.

REDUCE TO 2 1/2 IN. X 3 IN.

NOTES:

1. INSTRUCTION SHEET TO BE WHITE SULPHUR FREE PAPER.
2. PRINT SHEETS 1 AND 2 ON BOTH SIDES OF SAME SHEET.

DET1074

USED ON: SEE TABLE		DRAWN MJB	DATE 09/14/92	REVISIONS		CABLING INSTRUCTIONS
PLOT SCALE: 1:1		APPR. DW	DATE 09/14/92	ISSUE	CHANGES	
DASH NO.	M CODE	MADE FROM		1	CN 34352 E JCA 12/11/92	 <b>KINGS</b> ELECTRONICS CO., INC. TUCKAHOE, NEW YORK 10707
				2	CN 34620 C MJB 05/04/93	
						3-559 (SHEET 2 OF 2)