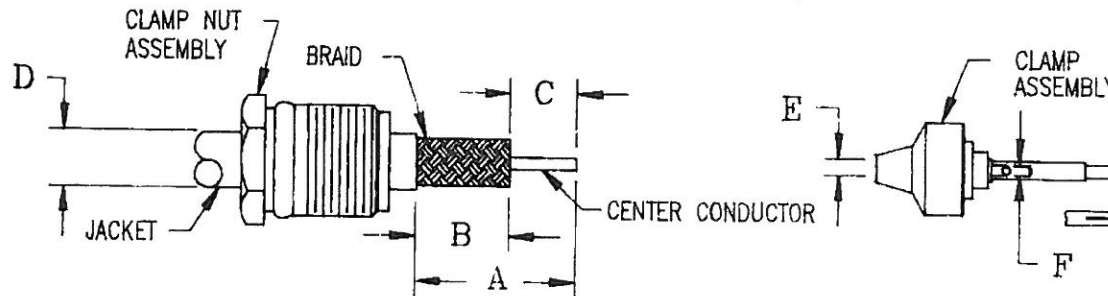


(OVER)



KINGS ELECTRONICS CO., INC., TUCKAHOE, NEW YORK

3-526



MILITARY PART NO. M39012/	KINGS PART NO.	CABLE PART NO. M17,	A DIM ±.016	B DIM ±.016	C DIM ±.016	D DIM	E DIM	F DIM
26-0101 27-0101 28-0101 29-0101 30-0101	125-67-5 123-12-5 122-27-5 121-23-5 126-55-5	J28-RG058 J84-RG223 128-RG400 060-RG142	.600	.380	.220	.220	.120	.050
26-0102 27-0102 28-0102 29-0102 30-0102	125-72-5 123-13-5 122-28-5 121-26-5 126-54-5	29-RG59 * 030-RG062 90-RG71 97-RG210	.660	.440	.220	.259	.150	.050
26-0103 27-0103 28-0103 29-0103 30-0103	125-73-5 123-14-5 122-29-5 121-27-5 126-56-5	054-RG122	.600	.380	.220	.180	.100	.050

* FOR AIR SPACED CABLE USE INSULATOR BUSHING SUPPLIED
 REDUCE "B" DIM (DIELECTRIC ONLY) BY .032 AND INCREASE "C" DIM TO .250


REDUCE TO 2 1/2 IN. X 3 IN.

NOTES:
 1. INSTRUCTION SHEET TO BE WHITE SULPHUR FREE PAPER.
 2. PRINT SHEETS 1 AND 2 ON BOTH SIDES OF SAME SHEET.

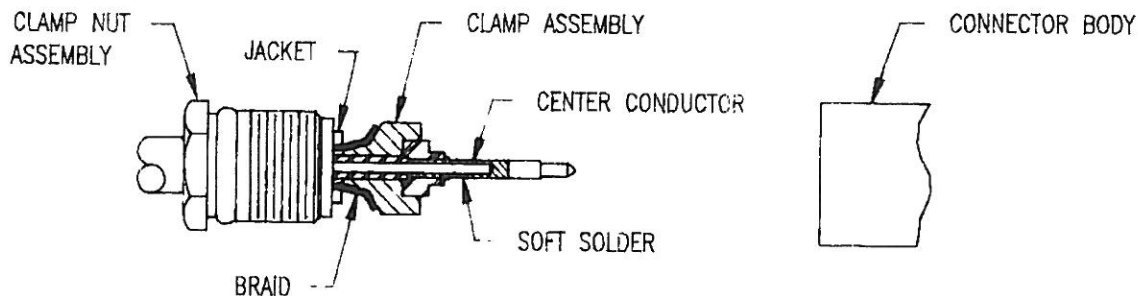
JCA2136

USED ON: SEE TABLE		DRAWN JCA	DATE 10/16/91	REVISIONS		CABLING INSTRUCTIONS
PLOT SCALE: 1:1		APPR. MJB	DATE 10/16/91	ISSUE	CHANGES	
DASH NO.	M CODE	MADE FROM		1	CN 34149 B MJB 09/17/92	 KINGS ELECTRONICS CO., INC. TUCKAHOE, NEW YORK 10707
-1	M88	INDIVIDUAL, CUT SHEETS				
-2	M88	PERFORATED STRIP ON ROLL				
						3-526 (SHEET 1 OF 2)

(OVER)

 KINGS ELECTRONICS CO., INC., TUCKAHOE, NEW YORK

3-526




1. CUT CABLE END SQUARE. SLIDE CLAMP NUT OVER JACKET & TRIM CABLE TO DIM'S SHOWN.
2. INSERT CLAMP ASSEMBLY BETWEEN DIELECTRIC & BRAID UNTIL DIELECTRIC BOTTOMS IN ASSEMBLY AND CENTER CONDUCTOR IS VISIBLE THROUGH CONTACT SOLDER HOLE SOLDER CENTER CONDUCTOR.
3. INSERT CABLE ASSEMBLY INTO CONNECTOR BODY, SLIDE CLAMP ASSEMBLY FORWARD UNTIL SEATED AND TIGHTEN CLAMP NUT TO A TORQUE OF 30 INCH/LBS. WHEN TIGHTENING THE CLAMP NUT ASSEMBLY MAKE SURE ONLY THE NUT TURNS, DO NOT ROTATE BODY, DAMAGE TO THE CENTER CONDUCTOR MIGHT OCCUR.

REDUCE TO 2 1/2 IN. X 3 IN.

NOTES:

1. INSTRUCTION SHEET TO BE WHITE SULPHUR FREE PAPER.
2. PRINT SHEETS 1 AND 2 ON BOTH SIDES OF SAME SHEET.

JCA2137

USED ON: SEE TABLE		DRAWN JCA	DATE 10/16/91	REVISIONS		CABLING INSTRUCTIONS
PLOT SCALE: 1:1		APPR. MJB	DATE 10/16/91	ISSUE	CHANGES	
DASH NO.	M CODE	MADE FROM		1	CN 34149 B MJB 09/17/92	 KINGS ELECTRONICS CO., INC. TUCKAHOE, NEW YORK 10707
						3-526 (SHEET 2 OF 2)