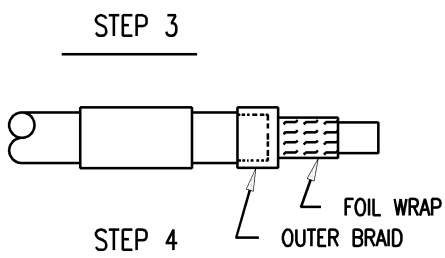
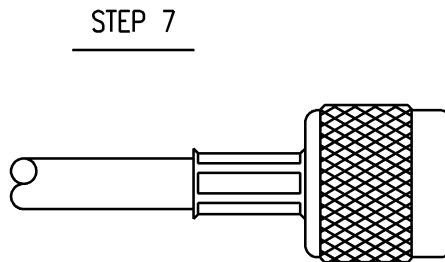
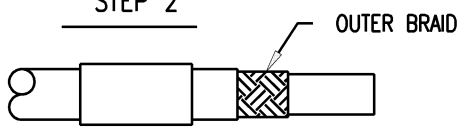
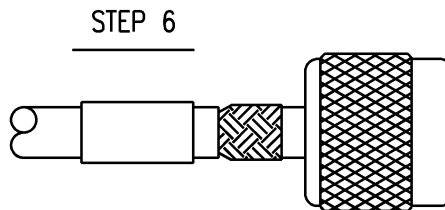
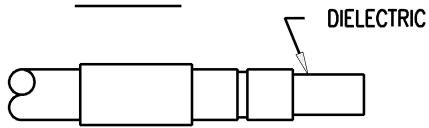
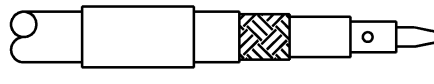
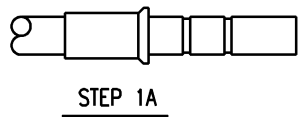
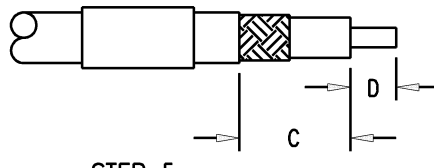
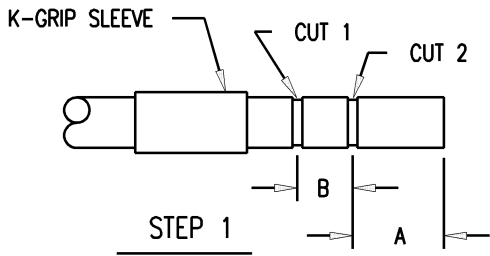


DASH NO.	M CODE	MADE FROM
----------	--------	-----------

3-440 (SHEET 1 OF 2)




REVISIONS	
ISSUE	CHANGES
1	CN 31394 E REDRAWN KH 12 OCT 89
2	CN 35898 E MJB 01/24/95

SCALE
APPROX SURFACE AREA
USED ON 2431-75-*
REF:
CABLING INSTRUCTIONS
DRAWN KH DATE 12OCT89
DESIGN JT DATE 13NOV89
APPR. VLS DATE 20NOV89

KINGS
ELECTRONICS CO., INC.
TUCKAHOE, NEW YORK 10707

3-440
(SHEET 1 OF 2)

DASH NO.	M CODE	MADE FROM	3-440 (SHEET 2 OF 2)	
<p>STEP 1. CUT CABLE END SQUARE, SLIDE K-GRIP SLEEVE OVER JACKET. (CAUTION: WHEN USING A SINGLE STEP W/P SLEEVE, SLIDE SMALL END OVER CABLE FIRST AS SHOWN, SEE STEP 1A.) WITH JACKET TRIM JIG MAKE CUTS 1 AND 2 IN JACKET.</p> <p>STEP 2. REMOVE JACKET TO DIMENSION "A". FLARE OR BULGE BACK OUTER BRAID, (FLAT STRIP BRAID AND FOIL WRAP WHEN APPLICABLE) AND TRIM AT EDGE OF JACKET.</p> <p>STEP 3. REMOVE JACKET TO DIMENSION "B".</p> <p>STEP 4. (FOR CABLES WITH FOIL WRAP) FOLD BACK OUTER BRAID (OR IN SOME CASES FLAT STRIP BRAID) AT JACKET SHOULDER AND REMOVE FOIL WRAP. BE SURE NOT TO DAMAGE EITHER BRAID WHEN REMOVING FOIL WRAP. FOLD DOWN BRAID BACK IN PLACE OVER DIELECTRIC TAKING CARE TO LEAVE STRANDS IN PLACE AS MUCH AS POSSIBLE.</p> <p>STEP 5. USING DIELECTRIC TRIM JIG, TRIM DIMENSION "C". EXPOSED CENTER CONDUCTOR LENGTH WILL BE EQUAL TO DIMENSION "D" OF TRIM CODE</p> <p>STEP 6. BOTTOM CONTACT AGAINST DIELECTRIC. SOLDER OR CRIMP CONTACT TO CENTER CONDUCTOR.</p> <p>STEP 7. FLARE OUTER BRAID (AND FLAT STRIP BRAID) BY CAREFULLY ROTATING THE DIELECTRIC. PUSH K-GRIP JR. OVER DIELECTRIC AND UNDER BOTH BRAIDS UNTIL CONTACT SNAPS IN PLACE OR DIELECTRIC BOTTOMS IN CONNECTOR.</p> <p>STEP 8. SLIDE K-GRIP SLEEVE AGAINST SHOULDER ON BODY AND FORM HEX BY CRIMPING.</p>			REVISIONS	
			ISSUE	CHANGES
			1	CN 31394 E REDRAWN KH 12 OCT 89
			2	CN 35898 E MJB 01/24/95
			SCALE	
			APPROX SURFACE AREA	
			USED ON 2431-75-*	
			REF:	
			CABLING INSTRUCTIONS	
			DRAWN KH	DATE 12OCT89
DESIGN JT	DATE 13NOV89			
APPR. VLS	DATE 20NOV89			
 3-440 (SHEET 2 OF 2)				

TRIM CODE CHART

DASH NO.	A	B	C	D
-1	.250	.344	.432	.156
-2	.375	.313	.500	.188
-3	.313	.281	.432	.156
-4	.281	.406	.500	.187