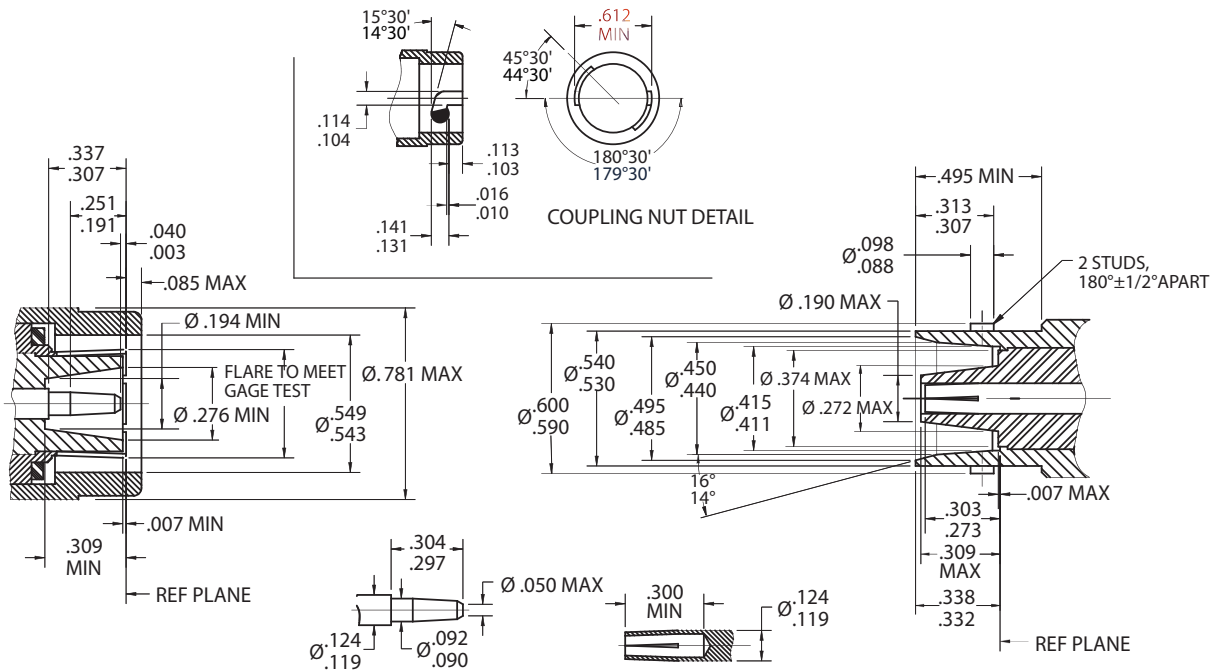




The Power of Creativity™

# C INTERFACE



## ELECTRICAL

Nominal Impedance: 50 ohms  
 Frequency Range: DC to 11 GHz  
 Voltage Rating: 1,000 volts rms  
 Dielectric Withstanding Voltage: 3,000 volts rms  
 Insulation Resistance: 5,000 megohms  
 VSWR: 1.35 max DC - 11 GHz

## MECHANICAL

Mating Characteristics: per MIL-STD-348  
 Connector Durability: 500 cycles min.  
 Cable Attachment: Clamp

## MATERIALS / FINISHES:

Body: Brass, Silver or Nickel Plated  
 Contacts (Inner): Female: Beryllium Copper, Silver or Gold Plated  
 Male: Brass, Silver or Gold Plated  
 Contacts (Outer): Brass, Silver or Nickel Plated  
 Contacts (Slotted): Beryllium, Silver or Nickel Plated  
 Insulators: Teflon  
 Gaskets & Seals: Silicone Rubber

## ENVIRONMENTAL

Temperature Range:  $-85^{\circ}\text{F}$  to  $+329^{\circ}\text{F}$  ( $-65^{\circ}\text{C}$  to  $+165^{\circ}\text{C}$ )  
 Vibration: MIL-STD-202 Method 204 (Test Cond. B)  
 Shock: MIL-STD-202 Method 213 (Test Cond. I)  
 Moisture Resistance: MIL-STD-202 Method 106  
 Corrosion (salt spray): MIL-STD-202 Method 101 (Test Cond. B)

# TRU Corporation

245 Lynnfield Street, Peabody, MA 01960 1-800-COAX-TRU (1-800-262-9878) www.trucorporation.com