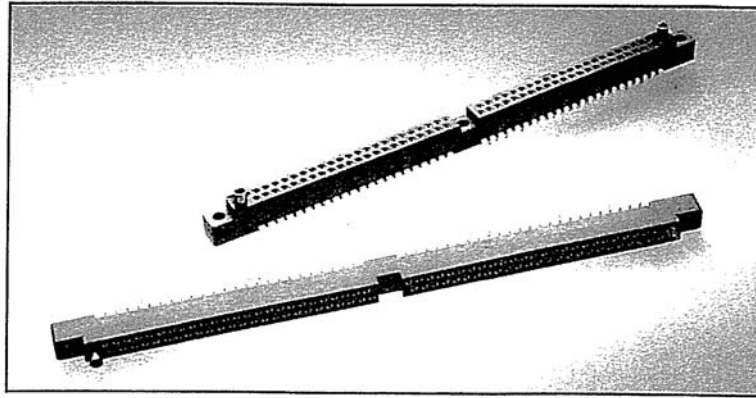


UER-MF Series

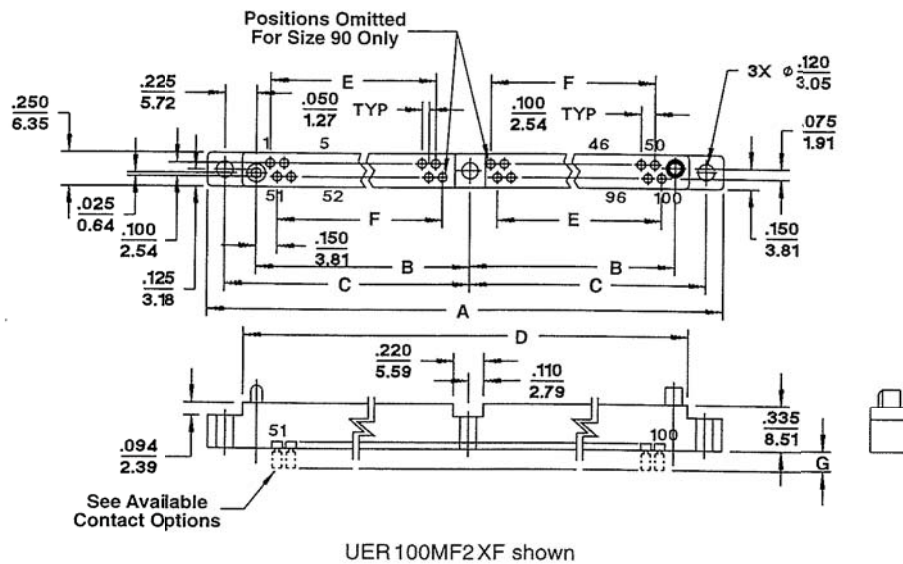
Male Body / Female Contact: .100" Centers — .050" offset

Description: Straight through socket connector with mounting ears.
 .100" (2.54) centers
 .050" (1.27) offset

Contacts: 90, 100, 120
Hardware: See page 13
Contact Termination: See page 13
Polarization Configuration: See page 22
Suggested Mounting: See below

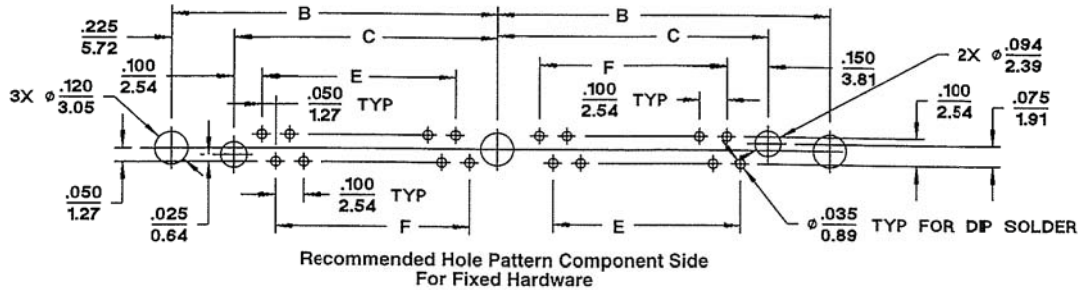


OUTLINE



MOUNTING LAYOUT

MIL-C-55302 / 60



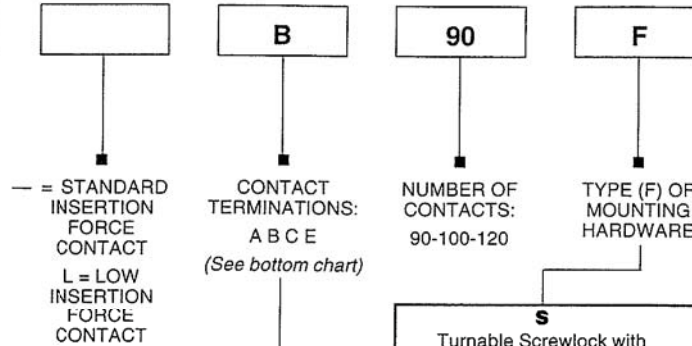
DIMENSIONS

# Contacts	A	B	C	D	E	F
90	5.650 (143.51)	2.700 (68.58)	2.475 (62.87)	5.150 (130.81)	2.200 (58.88)	2.100 (53.34)
100	6.150 (156.21)	2.950 (74.93)	2.725 (69.22)	5.650 (143.51)	2.400 (60.96)	2.400 (60.96)
120	7.150 (181.61)	3.450 (87.63)	3.225 (81.92)	6.650 (168.91)	2.900 (73.66)	2.900 (73.66)

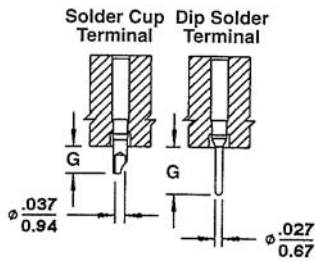


ORDERING INFORMATION

MIL-C-55302 / 60



AVAILABLE CONTACTS



UMR / UER - FEMALE CONTACTS

Contact Style	Terminal Type	Contact Term		Extension G ± .010
		CCC	MIL-C	
Female	Solder Cup	0	A	.100 (2.54)
	Dip Solder	2	B	.140 (3.56)
	Dip Solder	3	C	.172 (4.37)
	Dip Solder	4	E	.234 (5.94)

