

UMR-FF Series

Female Body / Female Contact: .100" Centers — .050" offset

Description: Straight through socket connector without mounting ears.
 .100" (2.54) centers
 .050" (1.27) offset

Contacts: 10-70

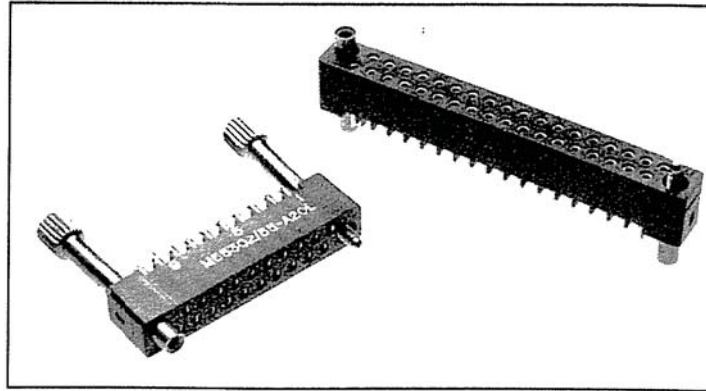
Hardware: See page 3

Contact Termination: See page 3

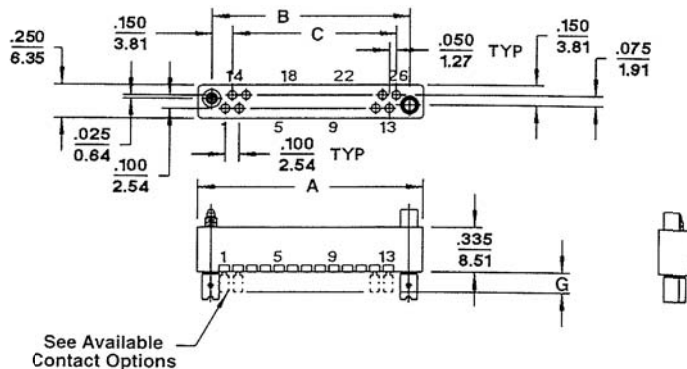
Polarization: See page 22

Configuration: See page 22

Suggested Mounting: See below



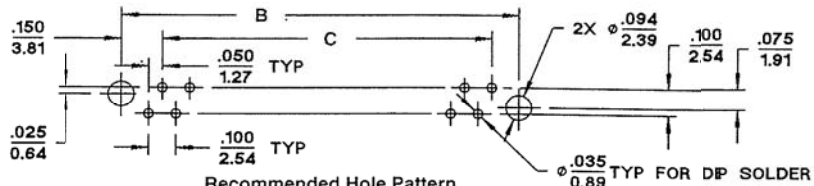
OUTLINE



UMR 026FF2KS shown

MOUNTING LAYOUT

MIL-C-55302 / 55



DIMENSIONS

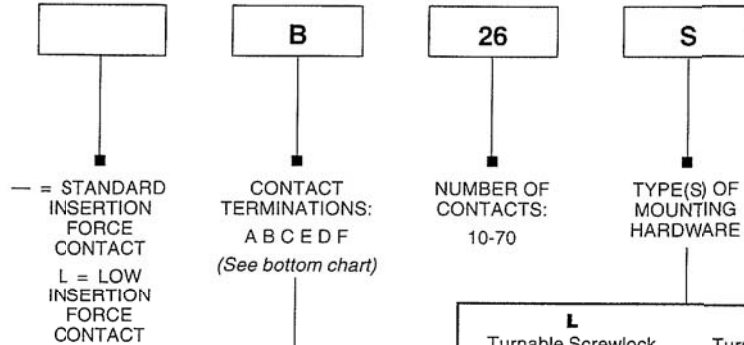
Dimensions are for reference only. Metric equivalents in (mm) are given for general information

# Contacts	A	B	C	# Contacts	A	B	C
10	.850 (21.59)	.650 (16.51)	.400 (10.16)	44	2.550 (64.77)	2.350 (59.69)	2.100 (53.34)
14	1.050 (26.67)	.850 (21.59)	.600 (15.24)	50	2.850 (72.39)	2.650 (67.31)	2.400 (60.96)
20	1.350 (34.29)	1.150 (29.21)	.900 (22.86)	54	3.050 (77.47)	2.850 (72.39)	2.600 (66.04)
24	1.550 (39.37)	1.350 (34.29)	1.100 (27.94)	56	3.150 (80.01)	2.950 (74.93)	2.700 (68.58)
26	1.650 (41.91)	1.450 (36.83)	1.200 (30.48)	60	3.350 (85.09)	3.150 (80.01)	2.900 (73.66)
30	1.850 (46.99)	1.650 (41.91)	1.400 (35.56)	66	3.650 (92.71)	3.450 (87.63)	3.200 (81.28)
36	2.150 (54.61)	1.950 (49.53)	1.700 (43.18)	70	3.850 (97.79)	3.650 (92.71)	3.400 (86.36)
40	2.350 (59.69)	2.150 (54.61)	1.900 (48.26)				

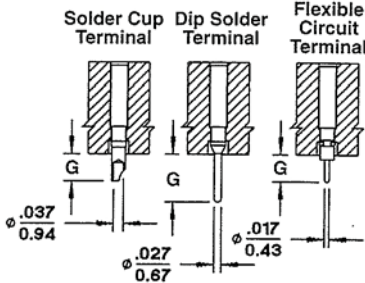


ORDERING INFORMATION

MIL-C-55302 / 55

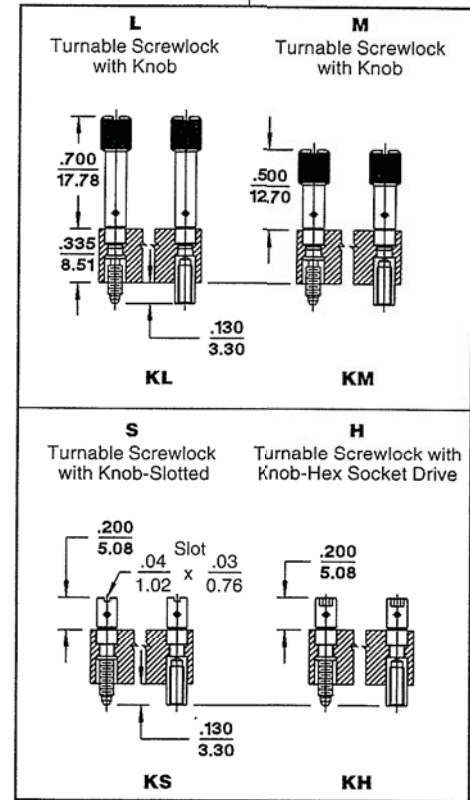


AVAILABLE CONTACTS



UMR / UER - FEMALE CONTACTS

Contact Style	Terminal Type	Contact Term		Extension G ±.010
		CCC	MIL-C	
Female	Solder Cup	0	A	.100 (2.54)
	Dip Solder	2	B	.140 (3.56)
	Dip Solder	3	C	.172 (4.37)
	Dip Solder	4	E	.234 (5.94)
	Flexible Circuit	5	D	.058 (1.47)
	Flexible Circuit	6	F	.100 (2.54)



Designation UMR

RYTON
POLYPHENYLENE
SULFIDE
MIL-M-24519
TYPE GST-40F
COLOR BLACK
STANDARD

026

NUMBER OF CONTACTS:
10-70

FF

BODY / CONTACT STYLE DESIGNATION:
FF = FEMALE SOCKET CONTACT, CLOSED ENTRY

2

CONTACT TERMINATION:
0, 2, 3
4, 5, 6

KS

TYPE (S) OF MOUNTING HARDWARE.
OTHER TYPES SHOWN ON PG. 24

