
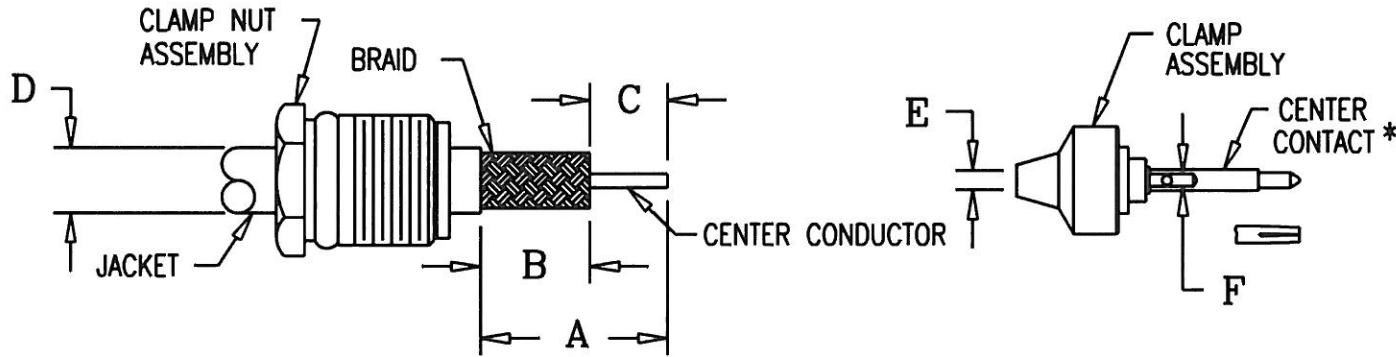


(OVER)

 KINGS ELECTRONICS CO., INC., TUCKAHOE, NEW YORK

3-571




KINGS PART NO.	CABLE PART NO. M17/	A DIM ±.016	B DIM ±.016	C DIM ±.016	D DIM	E DIM	F DIM
752-38-5	152-00001 (RD-316)	.532	.219	.313			
1202-16-5	113-RG316 119-RG174	.530	.210	.320	.127	.065	.033
1202-17-5	RAYTHEON 48152-1 152-00001 (RD-316)						

NOTES:  
\* 1. CENTER CONTACT SUPPLIED LOOSE

REDUCE TO 2 1/2 IN. X 3 IN.

NOTES:  
1. INSTRUCTION SHEET TO BE WHITE SULPHUR FREE PAPER.  
2. PRINT SHEETS 1 AND 2 ON BOTH SIDES OF SAME SHEET.

JCA3945

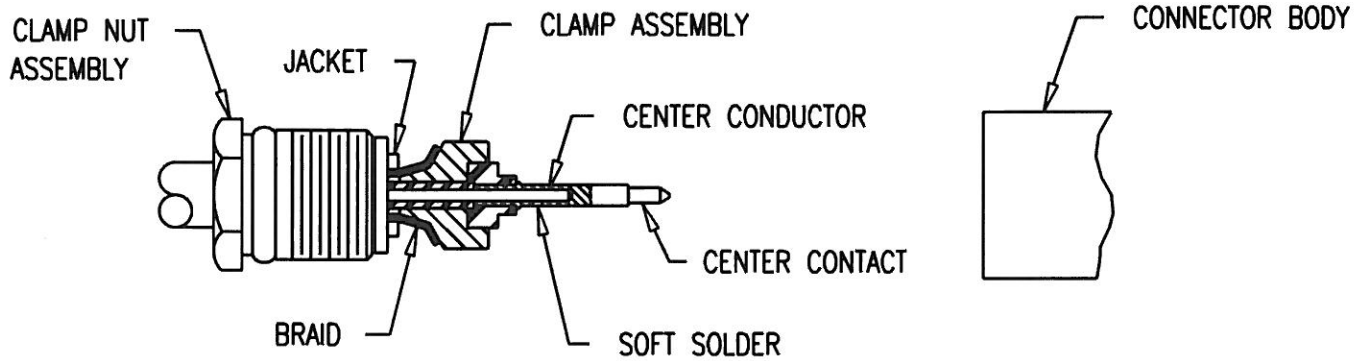
USED ON: SEE TABLE			DRAWN JCA		DATE 06/09/93		REVISIONS		CABLING INSTRUCTIONS
PLOT SCALE: 1:1			APPR. JT		DATE 06/09/93		ISSUE CHANGES		
DASH NO.	M CODE	MADE FROM				1	CN 34761 A	MJB 06/28/93	 <b>KINGS</b> ELECTRONICS CO., INC. TUCKAHOE, NEW YORK 10707
-1	M88	INDIVIDUAL, CUT SHEETS				2	CN 35837 C	MJB 09/22/94	
-2	M88	PERFORATED STRIP ON ROLL							
									3-571 (SHEET 1 OF 2)

(OVER)



KINGS ELECTRONICS CO., INC., TUCKAHOE, NEW YORK

3-571



1. CUT CABLE END SQUARE. SLIDE CLAMP NUT OVER JACKET & TRIM CABLE TO DIM'S SHOWN.
2. INSERT CLAMP ASSEMBLY BETWEEN DIELECTRIC AND BRAID UNTIL DIELECTRIC BOTTOMS IN ASSEMBLY AND CENTER CONDUCTOR IS VISIBLE. PRESS CENTER CONTACT INTO INSULATOR UNTIL BOTTOMED AND CENTER CONDUCTOR IS VISIBLE THROUGH SOLDER HOLE. SOLDER CENTER CONDUCTOR.
3. INSERT CABLE ASSEMBLY INTO CONNECTOR BODY, SLIDE CLAMP ASSEMBLY FORWARD UNTIL SEATED AND TIGHTEN CLAMP NUT TO A TORQUE OF 30 INCH-LBS. WHEN TIGHTENING THE CLAMP NUT ASSEMBLY MAKE SURE ONLY THE NUT TURNS, DO NOT ROTATE BODY, DAMAGE TO THE CENTER CONDUCTOR MIGHT OCCUR.

REDUCE TO 2 1/2 IN. X 3 IN.

NOTES:  
 1. INSTRUCTION SHEET TO BE WHITE SULPHUR FREE PAPER.  
 2. PRINT SHEETS 1 AND 2 ON BOTH SIDES OF SAME SHEET.

JCA3946

USED ON: SEE TABLE		DRAWN JCA	DATE 06/09/93	REVISIONS		CABLING INSTRUCTIONS
PLOT SCALE: 1:1		APPR. JT	DATE 06/09/93	ISSUE	CHANGES	
DASH NO.	M CODE	MADE FROM		1	CN 34761 A MJB 06/28/93	<b>KINGS</b> ELECTRONICS CO., INC. TUCKAHOE, NEW YORK 10707
				2	CN 35837 C MJB 09/22/94	
						3-571 (SHEET 2 OF 2)