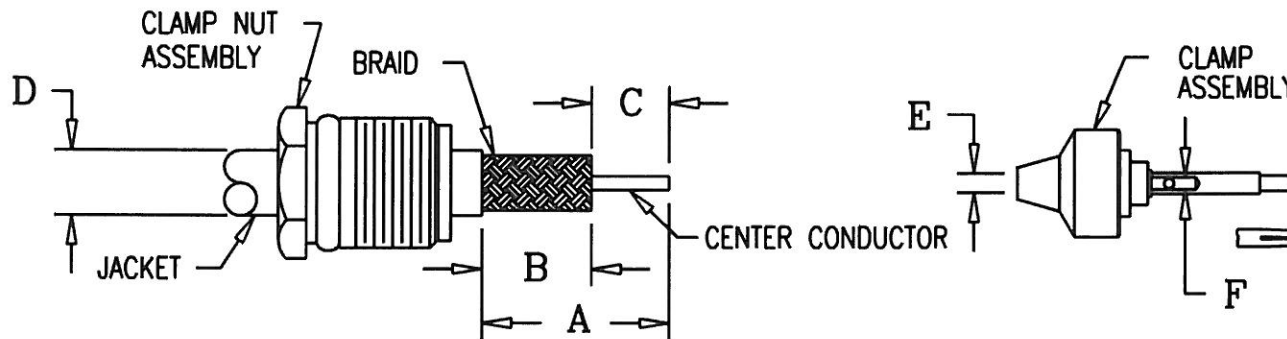


(OVER)



KINGS ELECTRONICS CO., INC., TUCKAHOE, NEW YORK

3-561



MILITARY PART NO. M39012/	KINGS PART NO.	CABLE PART NO. M17/	A DIM ±.016	B DIM ±.016	C DIM ±.016	D DIM	E DIM	F DIM
16-0101 17-0101 18-0102 19-0101 20-0101	755-74-5 753-8-5 751-14-5 752-28-5 756-9-5	028-RG058 084-RG223 128-RG400 060-RG142	.563	.343	.220	.220	.120	.050
16-0102 17-0102 18-0101 19-0102 20-0102	755-77-5 753-9-5 751-13-5 752-29-5 756-12-5	29-RG59 * 030-RG062 90-RG71 97-RG210	.625	.406	.220	.259	.150	.050
16-0103 17-0103 18-0103 19-0110	755-83-5 753-10-5 751-15-5 752-31-5	054-RG122	.563	.343	.220	.180	.100	.050

\* FOR AIR SPACED CABLE USE INSULATOR BUSHING SUPPLIED  
REDUCE "B" DIM (DIELECTRIC ONLY) BY .032 AND INCREASE "C" DIM TO .250

REDUCE TO 2 1/2 IN. X 3 IN.

NOTES:  
1. INSTRUCTION SHEET TO BE WHITE SULPHUR FREE PAPER.  
2. PRINT SHEETS 1 AND 2 ON BOTH SIDES OF SAME SHEET.

DET1080

USED ON: SEE TABLE

DRAWN MJB

DATE 09/17/92

REVISIONS

CABLING INSTRUCTIONS

PLOT SCALE: 1:1

APPR.

DATE

ISSUE

CHANGES

DASH  
NO.M  
CODE

MADE FROM

-1

M88

INDIVIDUAL, CUT SHEETS

-2


M88

PERFORATED STRIP ON ROLL

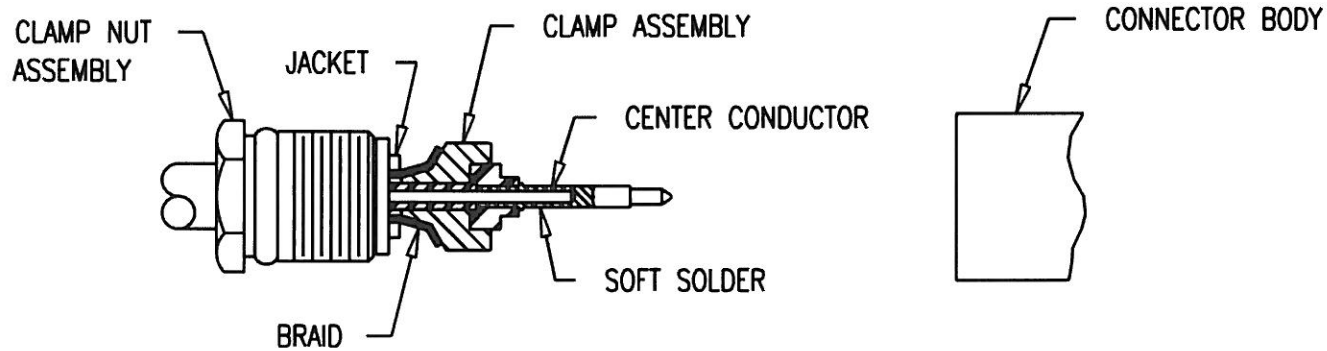
ELECTRONICS CO., INC.  
TUCKAHOE, NEW YORK 10707

3-561 (SHEET 1 OF 2)

(OVER)

 KINGS ELECTRONICS CO., INC., TUCKAHOE, NEW YORK

3-561




1. CUT CABLE END SQUARE. SLIDE CLAMP NUT OVER JACKET & TRIM CABLE TO DIM'S SHOWN.
2. INSERT CLAMP ASSEMBLY BETWEEN DIELECTRIC & BRAID UNTIL DIELECTRIC BOTTOMS IN ASSEMBLY AND CENTER CONDUCTOR IS VISIBLE THROUGH CONTACT SOLDER HOLE SOLDER CENTER CONDUCTOR.
3. INSERT CABLE ASSEMBLY INTO CONNECTOR BODY, SLIDE CLAMP ASSEMBLY FORWARD UNTIL SEATED AND TIGHTEN CLAMP NUT TO A TORQUE OF 30 INCH/LBS. WHEN TIGHTENING THE CLAMP NUT ASSEMBLY MAKE SURE ONLY THE NUT TURNS, DO NOT ROTATE BODY, DAMAGE TO THE CENTER CONDUCTOR MIGHT OCCUR.

REDUCE TO 2 1/2 IN. X 3 IN.

NOTES:  
 1. INSTRUCTION SHEET TO BE WHITE SULPHUR FREE PAPER.  
 2. PRINT SHEETS 1 AND 2 ON BOTH SIDES OF SAME SHEET.

DET1081

USED ON: SEE TABLE			DRAWN MJB	DATE 09/17/92	REVISIONS	CABLING INSTRUCTIONS
PLOT SCALE: 1:1			APPR.	DATE	ISSUE	
DASH NO.	M CODE	MADE FROM			 <b>KINGS</b> ELECTRONICS CO., INC. TUCKAHOE, NEW YORK 10707	