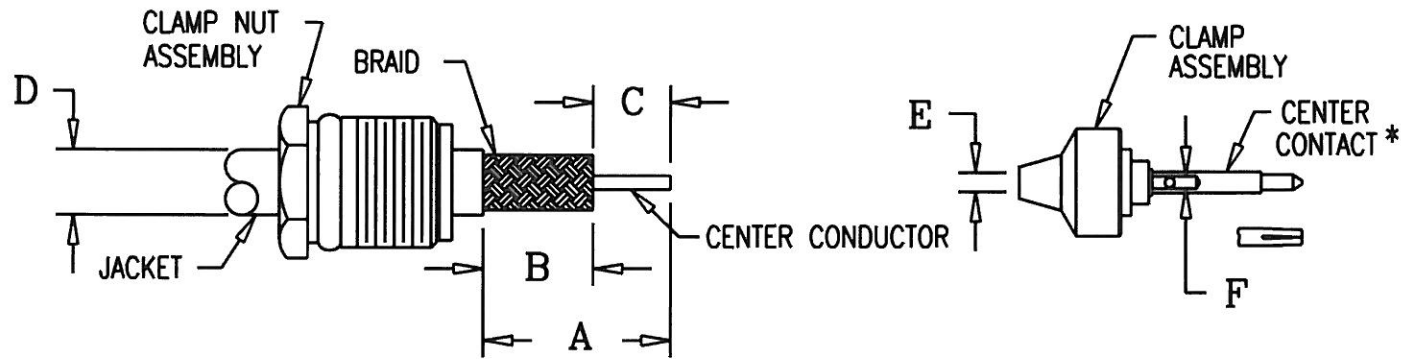


(OVER)



KINGS ELECTRONICS CO., INC., TUCKAHOE, NEW YORK

3-527



MILITARY PART NO. M39012/	KINGS PART NO.	CABLE PART NO. M17/	A DIM ±.016	B DIM ±.016	C DIM ±.016	D DIM	E DIM	F DIM
26-0104 27-0104 28-0104 29-0104 30-0104	125-74-5 123-15-5 122-30-5 121-28-5 126-61-5	111-RG303	.600	.380	.220	.180	.120	.050
26-0117 27-0117 28-0117 29-0117 30-0117	125-75-5 123-16-5 122-31-5 121-29-5 126-62-5	110-RG302	.660	.440	.220	.220	.150	.050
26-0018 27-0018 28-0018 29-0018 30-0118	125-76-5 123-17-5 122-32-5 121-30-5 126-56-5	113-RG316 119-RG174	.545	.220	.325	.127	.065	.025

* CENTER CONTACT SUPPLIED LOOSE WITH RG316/RG174 CONNECTORS

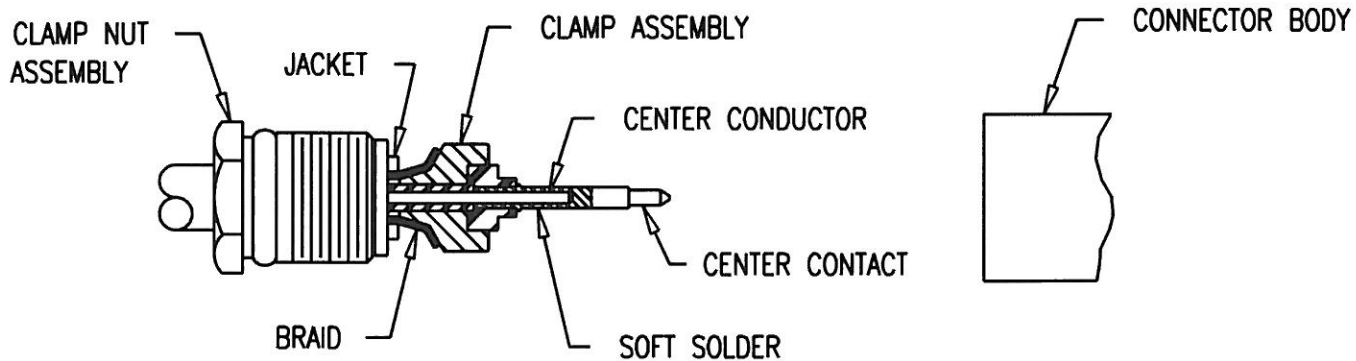
REDUCE TO 2 1/2 IN. X 3 IN.

NOTES:
 1. INSTRUCTION SHEET TO BE WHITE SULPHUR FREE PAPER.
 2. PRINT SHEETS 1 AND 2 ON BOTH SIDES OF SAME SHEET.

JCA2138

USED ON: SEE TABLE			DRAWN JCA	DATE 10/16/91	REVISIONS		CABLING INSTRUCTIONS
PLOT SCALE: 1:1			APPR. MJB	DATE 10/16/91	ISSUE	CHANGES	
DASH NO.	M CODE	MADE FROM			1	CN 34048 C JCA 07/28/92	 ELECTRONICS CO., INC. TUCKAHOE, NEW YORK 10707 3-527 (SHEET 1 OF 2)
-1	M88	INDIVIDUAL, CUT SHEETS			2	CN 34149 B MJB 09/17/92	
-2	M88	PERFORATED STRIP ON ROLL			3	CN 34672 A KH 05/28/93	

(OVER)




1. CUT CABLE END SQUARE. SLIDE CLAMP NUT OVER JACKET & TRIM CABLE TO DIM'S SHOWN.
2. INSERT CLAMP ASSEMBLY BETWEEN DIELECTRIC & BRAID UNTIL DIELECTRIC BOTTOMS IN ASSEMBLY AND CENTER CONDUCTOR IS VISIBLE THROUGH CONTACT SOLDER HOLE SOLDER CENTER CONDUCTOR.
WHEN CENTER CONTACT IS SUPPLIED LOOSE INSERT CLAMP ASSEMBLY BETWEEN DIELECTRIC AND BRAID UNTIL DIELECTRIC BOTTOMS IN ASSEMBLY AND CENTER CONDUCTOR IS VISIBLE. PRESS CENTER CONTACT INTO INSULATOR UNTIL BOTTOMED AND CENTER CONDUCTOR IS VISIBLE THROUGH SOLDER HOLE. SOLDER CENTER CONDUCTOR.
3. INSERT CABLE ASSEMBLY INTO CONNECTOR BODY, SLIDE CLAMP ASSEMBLY FORWARD UNTIL SEATED AND TIGHTEN CLAMP NUT TO A TORQUE OF 30 INCH/LBS. WHEN TIGHTENING THE CLAMP NUT ASSEMBLY MAKE SURE ONLY THE NUT TURNS, DO NOT ROTATE BODY, DAMAGE TO THE CENTER CONDUCTOR MIGHT OCCUR.

REDUCE TO 2 1/2 IN. X 3 IN.

NOTES:
 1. INSTRUCTION SHEET TO BE WHITE SULPHUR FREE PAPER.
 2. PRINT SHEETS 1 AND 2 ON BOTH SIDES OF SAME SHEET.

JCA2139

USED ON: SEE TABLE			DRAWN JCA	DATE 10/16/91	REVISIONS		CABLING INSTRUCTIONS
PLOT SCALE: 1:1			APPR. MJB	DATE 10/16/91	ISSUE	CHANGES	
DASH NO.	M CODE	MADE FROM			1	CN 34048 C JCA 07/28/92	 KINGS ELECTRONICS CO., INC. TUCKAHOE, NEW YORK 10707
					2	CN 34149 B MJB 09/17/92	
					3	CN 34672 A KH 05/28/93	
							3-527 (SHEET 2 OF 2)