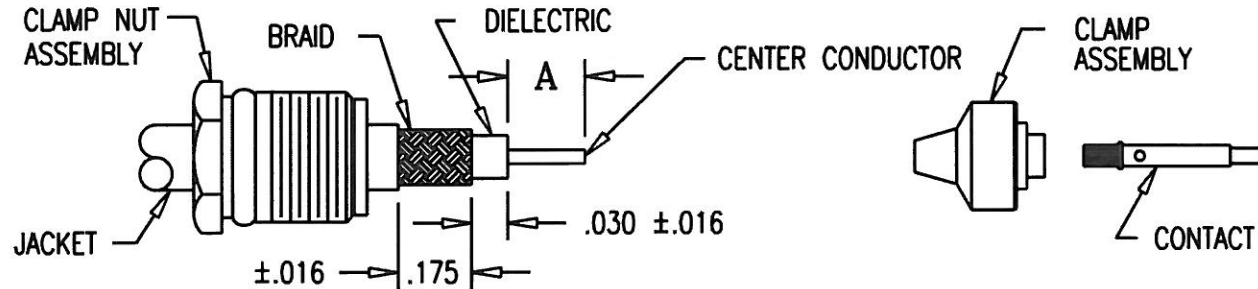


(OVER)

KINGS ELECTRONICS CO., INC., TUCKAHOE, NEW YORK

3-519



MILITARY PART NO. M39012/	KINGS PART NO.	CABLE PART NO. M17/	A DIM ±.016
55-3009	875-82-17	28-RG058	.160
55-3109	875-82-3	60-RG142	
56-3109	876-61-3	84-RG223	
56-3009	876-61-17	155-00001	
57-3009	873-48-3	158-00001	
58-3009	871-51-3	167-00001	
59-3009	872-45-3		
55-3010	875-85-17	111-RG303	.160
55-3110	875-85-3	170-00001	
56-3010	876-67-17		
56-3110	876-67-3		
57-3010	873-49-3		
58-3010	871-55-3		
59-3010	872-46-3		
55-3030	875-86-17	152-00001	.220
55-3130	875-86-3		
56-3030	876-62-17		
56-3130	876-62-3		
57-3030	873-50-3		
58-3030	871-56-3		
59-3030	872-40-3		

REDUCE TO 2 1/2 IN. X 3 IN.

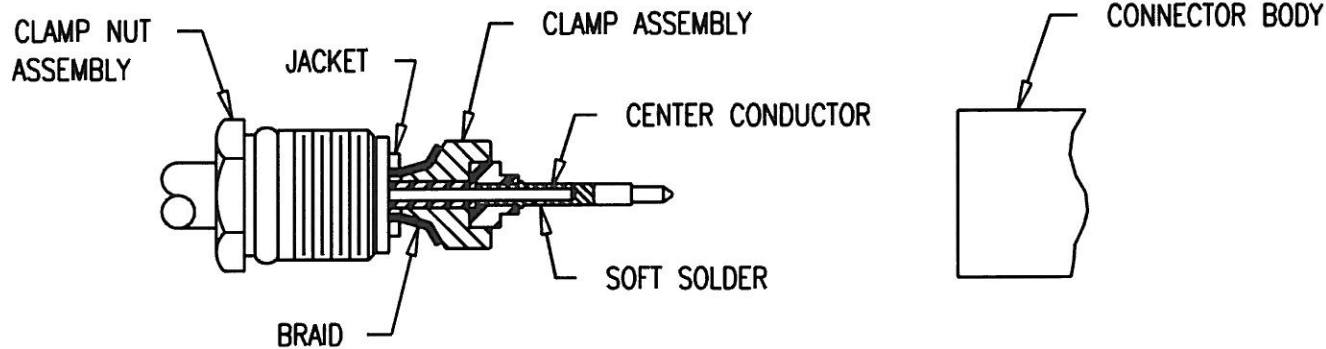
NOTES:
 1. INSTRUCTION SHEET TO BE WHITE SULPHUR FREE PAPER.
 2. PRINT SHEETS 1 AND 2 ON BOTH SIDES OF SAME SHEET.

KAM1274

USED ON: SEE TABLE		DRAWN KH	DATE 07/17/91	REVISIONS		CABLING INSTRUCTIONS
PLOT SCALE: 1:1		APPR. DW	DATE 06/19/92	ISSUE	CHANGES	
DASH NO.	M CODE	MADE FROM		1	CN 34141 E MJB 09/14/92	
-1	M88	INDIVIDUAL, CUT SHEETS		2	CN 34350 E JCA 12/11/92	
-2	M88	PERFORATED STRIP ON ROLL		3	CN 34620 C MJB 05/04/93	
						3-519 (SHEET 1 OF 2)

MAY 2007 THIS DRAWING BECAME THE PROPERTY OF WINCHESTER ELECTRONICS CORPORATION, WALLINGFORD, CT 06492

(OVER)



1. CUT CABLE END SQUARE. SLIDE CLAMP NUT OVER JACKET & TRIM CABLE TO DIM'S SHOWN.
2. INSERT CLAMP ASSEMBLY BETWEEN DIELECTRIC & BRAID UNTIL DIELECTRIC BOTTOMS IN ASSEMBLY AND CENTER CONDUCTOR IS VISIBLE. PRESS CONTACT INTO INSULATOR UNTIL BOTTOMED AND CENTER CONDUCTOR IS VISIBLE THROUGH CONTACT SOLDER HOLE. SOLDER CENTER CONDUCTOR.
3. INSERT CABLE ASSEMBLY INTO CONNECTOR BODY, SLIDE CLAMP ASSEMBLY FORWARD UNTIL SEATED AND TIGHTEN CLAMP NUT TO A TORQUE OF 30 INCH/LBS. WHEN TIGHTENING THE CLAMP NUT ASSEMBLY MAKE SURE ONLY THE NUT TURNS, DO NOT ROTATE BODY, DAMAGE TO THE CENTER CONDUCTOR MIGHT OCCUR.
4. WHEN USING M17/84-RG223 CABLE, A SMALL AMOUNT OF O-RING LUBE MAY BE USED TO FACILITATE CABLE JACKET ENTRY THROUGH THE INTERNAL O-RING. IF DESIRED, THE INTERNAL O-RING MAY BE DISCARDED WHEN USING THIS CABLE.

REDUCE TO 2 1/2 IN. X 3 IN.

NOTES:
 1. INSTRUCTION SHEET TO BE WHITE SULPHUR FREE PAPER.
 2. PRINT SHEETS 1 AND 2 ON BOTH SIDES OF SAME SHEET.

KAM1275

USED ON: SEE TABLE		DRAWN KH	DATE 07/17/91	REVISIONS		CABLING INSTRUCTIONS
PLOT SCALE: 1:1		APPR. DW	DATE 06/19/92	ISSUE	CHANGES	
DASH NO.	M CODE	MADE FROM		1	CN 34141 E MJB 09/14/92	
				2	CN 34350 E JCA 12/11/92	
				3	CN 34620 C MJB 05/04/93	
						3-519 (SHEET 2 OF 2)