
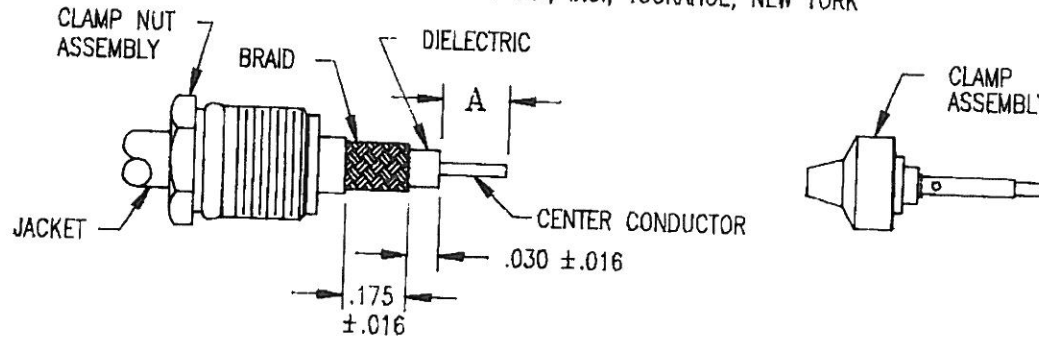


(OVER)

 KINGS ELECTRONICS CO., INC., TUCKAHOE, NEW YORK

3-515




KINGS PART NO.	CABLE PART NO. M17/	A DIM ±.016
872-40-101	152-00001	.220
876-63-3	95-RG-180	
871-57-3	152-00001	

REDUCE TO 2 1/2 IN. X 3 IN.


NOTES:

1. INSTRUCTION SHEET TO BE WHITE SULPHUR FREE PAPER.
2. PRINT SHEETS 1 AND 2 ON BOTH SIDES OF SAME SHEET.

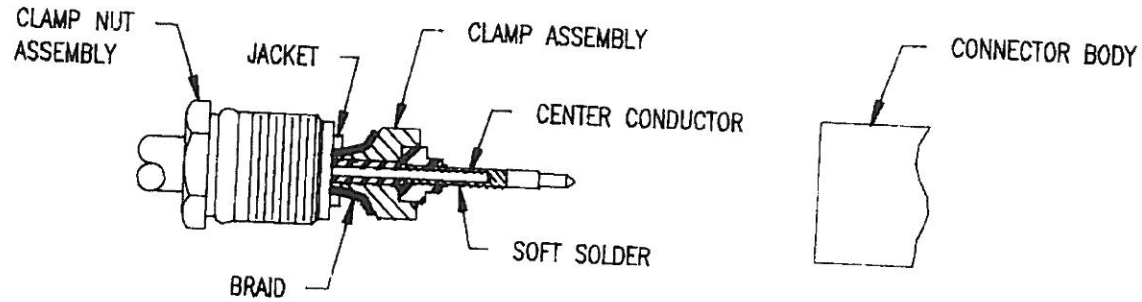
KAM1278

USED ON: SEE TABLE		DRAWN KH	DATE 07/17/91	REVISIONS		CABLING INSTRUCTIONS
PLOT SCALE: 1:1		APPR. GA	DATE 07/29/91	ISSUE	CHANGES	
DASH NO.	M CODE	MADE FROM		1	CN 34255 E JCA 10/27/92	 KINGS ELECTRONICS CO., INC. TUCKAHOE, NEW YORK 10707
-1	M88	INDIVIDUAL, CUT SHEETS				
-2	M88	PERFORATED STRIP ON ROLL				
						3-515 (SHEET 1 OF 2)

(OVER)

 KINGS ELECTRONICS CO., INC., TUCKAHOE, NEW YORK

3-515




1. CUT CABLE END SQUARE. SLIDE CLAMP NUT OVER JACKET & TRIM CABLE TO DIM'S SHOWN.
2. INSERT CLAMP ASSEMBLY BETWEEN DIELECTRIC & BRAID UNTIL DIELECTRIC BOTTOMS IN ASSEMBLY AND CENTER CONDUCTOR IS VISIBLE THROUGH CONTACT SOLDER HOLE. SOLDER CENTER CONDUCTOR.
3. INSERT CABLE ASSEMBLY INTO CONNECTOR BODY, SLIDE CLAMP ASSEMBLY FORWARD UNTIL SEATED AND TIGHTEN CLAMP NUT TO A TORQUE OF 30 INCH/LBS. WHEN TIGHTENING THE CLAMP NUT ASSEMBLY MAKE SURE ONLY THE NUT TURNS, DO NOT ROTATE BODY, DAMAGE TO THE CENTER CONDUCTOR MIGHT OCCUR.

REDUCE TO 2 1/2 IN. X 3 IN.

NOTES:

1. INSTRUCTION SHEET TO BE WHITE SULPHUR FREE PAPER.
2. PRINT SHEETS 1 AND 2 ON BOTH SIDES OF SAME SHEET.

KAM1279

USED ON: SEE TABLE		DRAWN KH	DATE 07/17/91	REVISIONS		CABLING INSTRUCTIONS
PLOT SCALE: 1:1		APPR. GA	DATE 07/29/91	ISSUE	CHANGES	
DASH NO.	M CODE	MADE FROM		1	CN 34255 E JCA 10/27/92	
						 KINGS ELECTRONICS CO., INC. TUCKAHOE, NEW YORK 10707
						3-515 (SHEET 2 OF 2)