


DASH NO.	M CODE	MADE FROM
-1	M88	PERFORATED STRIP ON ROLL
-2	M88	INDIVIDUAL, CUT SHEETS
-3	M88	PERFORATED STRIPS IN GROUPS OF FIVE

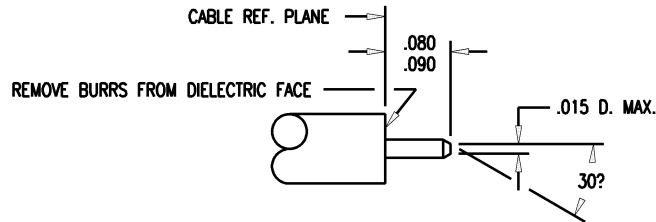
3-482 (SHEET 1 OF 2)

REVISIONS

ISSUE	CHANGES
1	CN 32751 C JCA 12/13/90

 KINGS ELECTRONICS CO., INC., TUCKAHOE, NEW YORK

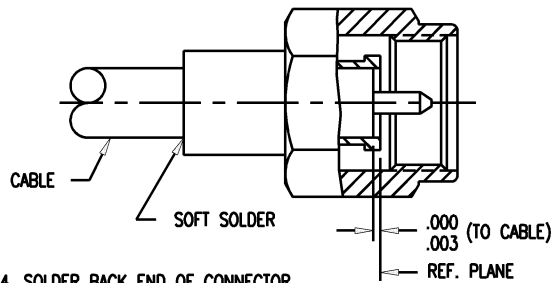
1. REMOVE CABLE OUTER CONDUCTOR AND DIELECTRIC TO .085 DIMENSION AS SHOWN.
2. CHAMFER CENTER CONDUCTOR TO 30° ANGLE AS SHOWN.




NOTE: STEP 1 & 2 MAY BE ACCOMPLISHED WITH EASE AND ACCURACY USING KINGS KTO-2 STRIPPING TOOL.

3. INSERT CABLE INTO BACK END OF CONNECTOR. PUSH CABLE IN FIRMLY UNTIL THE FACE OF CABLE BOTTOMS AGAINST REAR END OF INSULATOR. (CAUTION: EJECTION OF INSULATOR MAY BE PREVENTED BY MATING WITH A CONNECTOR OF OPPOSITE SEX).

FOR M39012/92 CONNECTORS—INSERT CABLE IN POSITION SHOWN BELOW



4. SOLDER BACK END OF CONNECTOR.

 KINGS ELECTRONICS CO., INC., TUCKAHOE, NEW YORK

MILITARY PART NO.	KINGS PART NO.	B	E	F	FIG.
M39012/79-3008	875-70-17	.190	—	—	1
M39012/79-3108	875-70-3	.190	—	—	1
M39012/80-3008	876-49-17	—	.171	.390	2
M39012/80-3108	876-49-3	—	.171	.390	2
M39012/81-3008	873-19-3	.284	—	—	3
M39012/82-3008	871-38-3	.037	—	—	4
M39012/83-3008	872-37-3	.053	—	—	5
M39012/92-3003	875-71-17	—	—	—	—
M39012/92-3103	875-71-3	—	—	—	—
M39012/92-3003	875-72-17	—	—	—	—
M39012/92-3103	875-72-3	—	—	—	—

3-482

(OVER)

REDUCE TO 5 IN. X 3 IN.

NOTES:

1. INSTRUCTION SHEET TO BE WHITE SULPHUR FREE PAPER & FOLDED IN HALF (2 1/2 X 3 IN.).
2. PRINT SHEETS 1 & 2 ON BOTH SIDES OF SAME SHEET.

SCALE	1:1	
APPROX SURFACE AREA		
USED ON		
REF:		
CABLING INSTRUCTIONS		
DRAWN	JCA	DATE 10/01/90
DESIGN	GA	DATE 10/03/90
APPR.		DATE

 **KINGS**
ELECTRONICS CO., INC.
TUCKAHOE, NEW YORK 10707

3-482 (SHEET 1 OF 2)