

STAINLESS STEEL COMPATIBLE LASER WELDABLE 50 OHM FEEDTHROUGH SMPM ADAPTABLE, .012 DIAMETER CENTER CONTACT, PRESS-IN

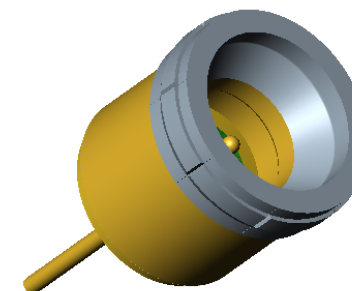
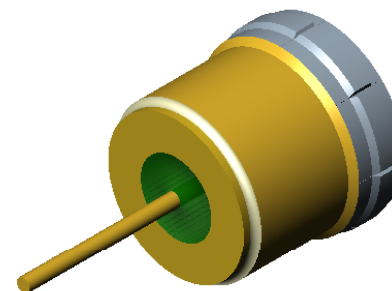
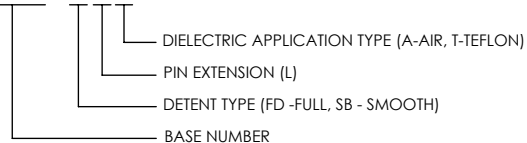
REVISIONS			
REV	CHANGE NO.	DATE	RELEASE APPROVAL
-	INIT RLSE	2012-09-25	<i>[Signature]</i>

- CONFIGURATION FOR INTERFACING TO SMPM "BULLET" STYLE ADAPTER
- DESIGNED TO LASER WELD INTO AN ELECTRONIC CHASSIS
- INDUSTRY STANDARD NICKEL-IRON-COBALT ALLOY CONTACT WITH CORNING 7070 EQUIVALENT GLASS
- INTEGRAL RF GROUNDING TAB FOR EXCELLENT PERFORMANCE OVER TEMPERATURE

1. LEAK RATE: LESS THAN OR EQUAL TO 1X10E-9 CC/SEC He @ ONE ATMOSPHERE DIFFERENTIAL PRESSURE.
2. NOMINAL IMPEDANCE: 50 OHMS
3. INTERFACE IN ACCORDANCE WITH MIL-STD-348, SMPM.
4. MATERIALS:
 PIN: NICKEL-IRON-COBALT ALLOY IN ACCORDANCE WITH ASTM F15.
 DIELECTRIC: CORNING 7070 EQUIVALENT GLASS (MATCHED SEAL).
 SHELL (WELD FLANGE): STAINLESS STEEL ALLOY 17-4PH IN ACCORDANCE WITH ASTM A564, TYPE 630.
 RF GROUNDING SPRING: BERYLLIUM-COPPER ALLOY 172/173 IN ACCORDANCE WITH ASTM B194 (NICKEL/GOLD PLATE).
5. FINISH:
 FERRULE AND PIN: NICKEL PLATE PER QQ-N-290, CLASS 2, .000100/.000250 THICK
 GOLD PLATE PER ASTM B488, TYPE III, CODE A, .000050/.000100 THICK.
 GROUNDING SPRING: NICKEL PLATE PER QQ-N-290, CLASS 2, .000100/.000250 THICK
 GOLD PLATE PER ASTM B488, TYPE III, CODE A, .000030/.000050 THICK.

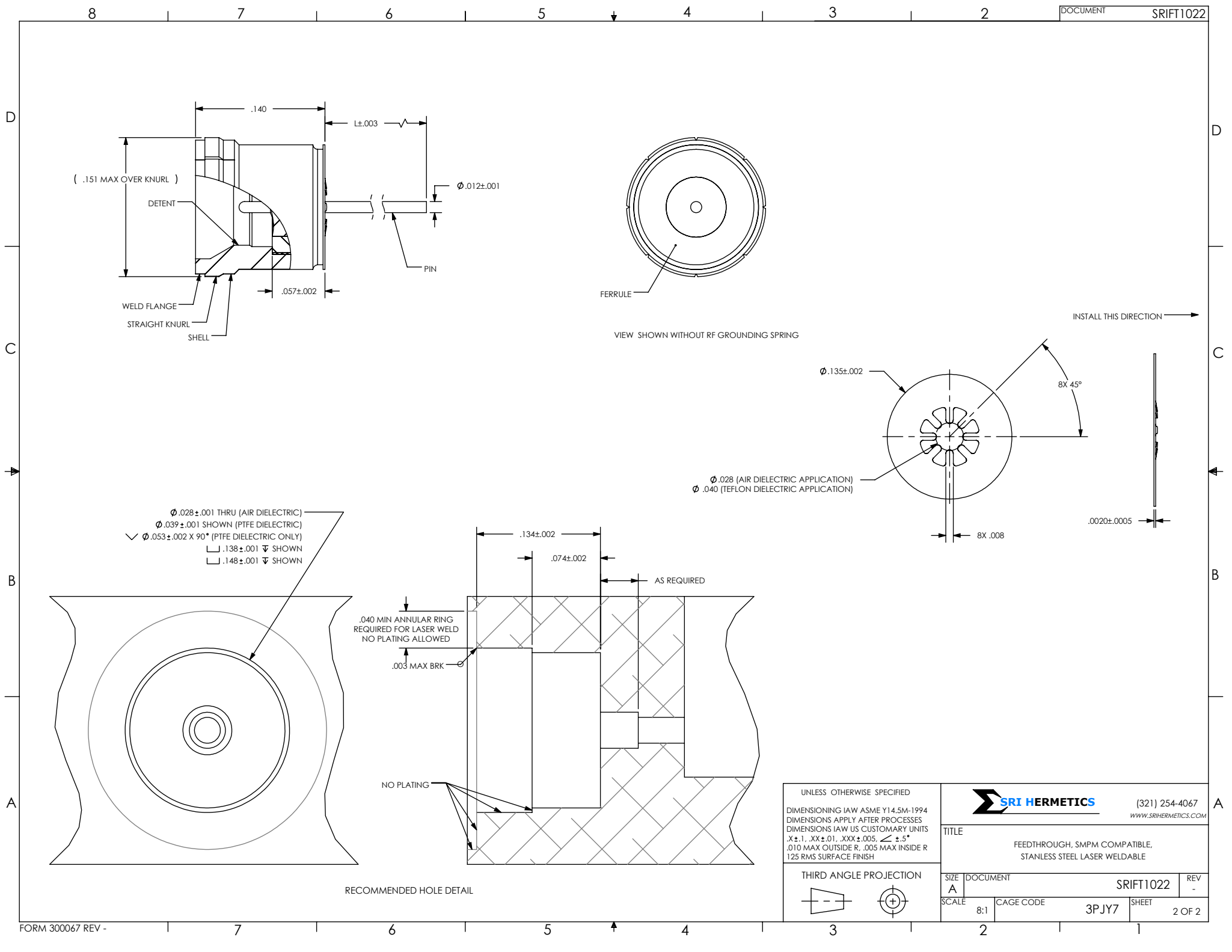
6. ORDERING INSTRUCTIONS:
 SPECIFY BASE NUMBER FOLLOWED BY DASH NUMBER INDICATING DETENT TYPE, PIN EXTENSION AND DIELECTRIC APPLICATION TYPE:

EXAMPLE: SRIFT1022 - FD 130 A



VIEWS SHOWN WITHOUT GROUNDING SPRING

UNLESS OTHERWISE SPECIFIED DIMENSIONING IAW ASME Y14.5M-1994 DIMENSIONS APPLY AFTER PROCESSES DIMENSIONS IAW US CUSTOMARY UNITS .X ± .1, .XX ± .01, .XXX ± .005, ∠ ± .5° .010 MAX OUTSIDE R, .005 MAX INSIDE R 125 RMS SURFACE FINISH		(321) 254-4067 WWW.SRIHERMETICS.COM	
THIRD ANGLE PROJECTION 		TITLE FEEDTHROUGH, SMPM COMPATIBLE, STAINLESS STEEL LASER WELDABLE	
SIZE A	DOCUMENT SRIFT1022	REV -	
SCALE 8:1	CAGE CODE 3PJY7	SHEET 1 OF 2	



UNLESS OTHERWISE SPECIFIED
 DIMENSIONING IAW ASME Y14.5M-1994
 DIMENSIONS APPLY AFTER PROCESSES
 DIMENSIONS IAW US CUSTOMARY UNITS
 $.X \pm .1, .XX \pm .01, .XXX \pm .005, \angle \pm .5^\circ$
 $.010$ MAX OUTSIDE R, $.005$ MAX INSIDE R
 125 RMS SURFACE FINISH

THIRD ANGLE PROJECTION

		(321) 254-4067 WWW.SRIHERMETICS.COM	
SIZE A	DOCUMENT SRIFT1022	REV -	SHEET 2 OF 2
SCALE 8:1	CAGE CODE 3PJY7	SHEET 2 OF 2	SHEET 2 OF 2