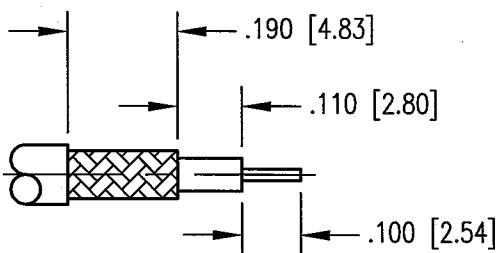
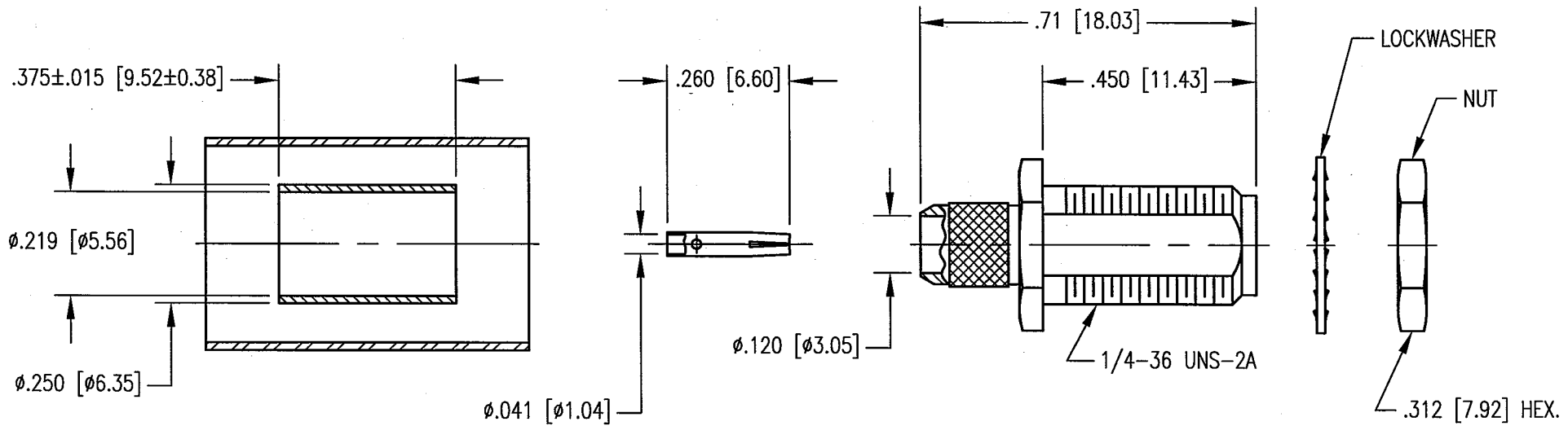
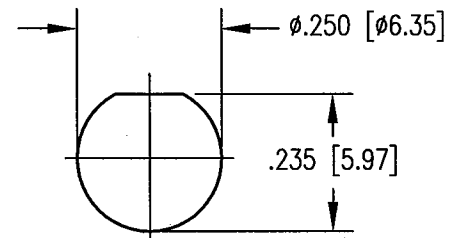


DWG. NO. 251-975-1161G		
REV	DESCRIPTION	BY DATE APPD
A	RELEASE PER ECR 7403	JWH 6/28/02



CABLE TRIMMING DIMENSIONS



RECOMMENDED MOUNTING HOLE

- NOTES:
- MATERIALS:
 INSULATOR: TEFLON PER ASTM D1710
 HEAT SHRINK TUBING: POLYOLEFIN
 CONTACT AND FERRULE: COPPER ALLOY
 BODY: STAINLESS STEEL PER ASTM A582
 ALL OTHER METAL PARTS: BRASS PER ASTM B16
 - FINISHS:
 BODY: .000015 MIN. GOLD PER MIL-G-45204 OVER
 .000050 MIN. NICKEL PER QQ-N-290
 CONTACT: .000030 MIN. GOLD PER MIL-G-45204 OVER
 .000050 MIN. NICKEL PER QQ-N-290
 LOCKWASHER, NUT AND FERRULE: .000005 MIN. GOLD PER MIL-G-45204 OVER
 .000050 MIN. NICKEL PER QQ-N-290
 - FOR USE WITH RG-58 CABLE OR EQUIVALENT.
 - FOR CABLING PROCEDURES USE CAP 9-04 WITH TRIMMING DIMENSIONS SHOWN.
 - CRIMP FERRULE USING .213 HEX DIE.

PER ASME Y14.5M-1994 UNLESS OTHERWISE SPECIFIED: DIMENSIONS ARE IN INCHES [MM]		NORTHROP GRUMMAN	
TOLERANCES: DECIMALS .XX ± .01 [0.254] .XXX ± .005 [0.127] ANGLES ± 2°		Winchester Electronics 400 Park Road Watertown, CT 06795	
CUSTOMER DRAWING		TITLE SMA STRAIGHT BULKHEAD JACK	
DRAWN JWH	DATE 6/28/02	CHECKED JWH	DATE 7/17/02
APPROVED JWH	DATE 7/17/02	APPROVED JWH	DATE 7/17/02
A		251-975-1161G	SHT. 1 OF 1 REV. A