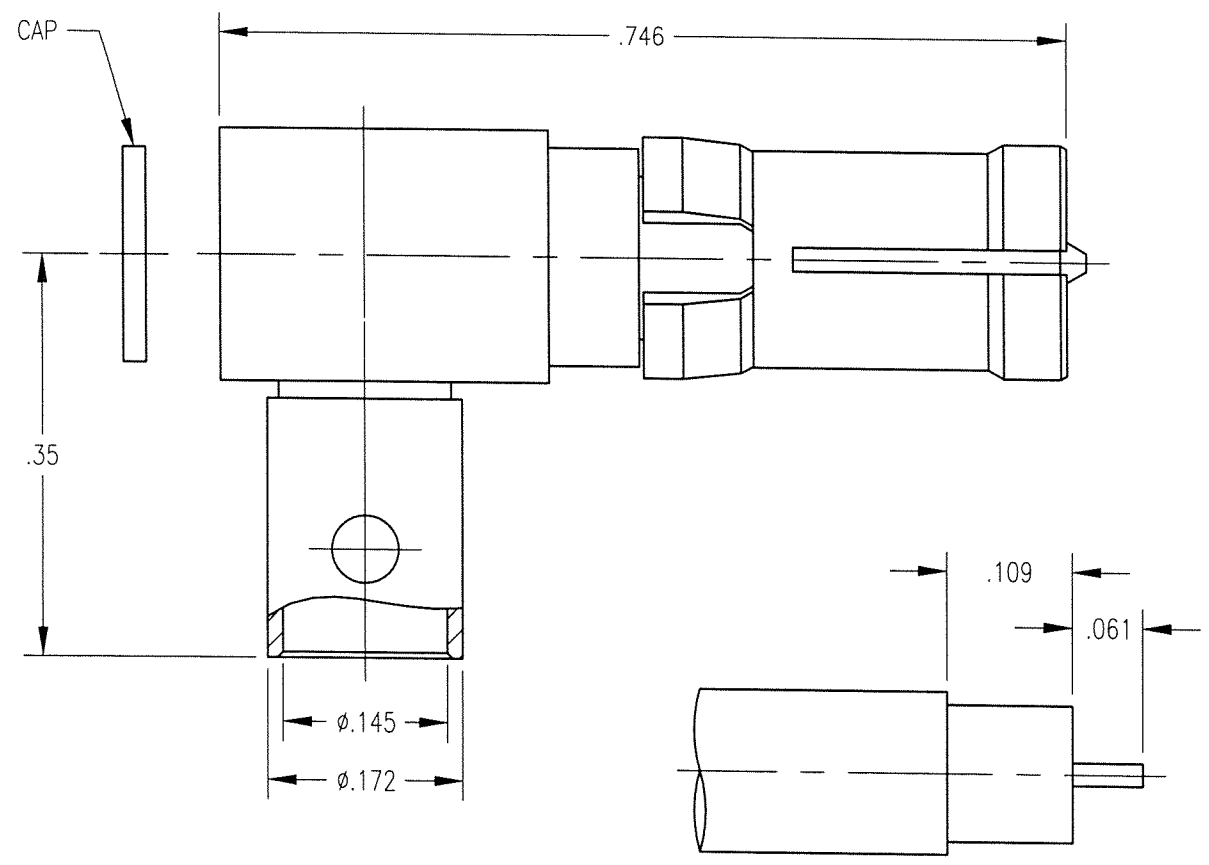


DWG. NO. 203-510-1410G

REV	DESCRIPTION	BY DATE	APPD
A	ECR 6993	TLO/BJG/HMY	lsp/10



NOTES:

- MATERIALS:
 FRONT BODY: BERYLLIUM COPPER PER ASTM B196
 CLIP RING: BERYLLIUM COPPER PER ASTM B194
 INSULATOR: TEFLON PER ASTM D1710
 ALL OTHER METAL PARTS: BRASS PER ASTM B16
- FINISH:
 CLIP RING: .000100 MIN. NICKEL PER QQ-N-290 OVER COPPER FLASH
 CAP: .000005 MIN. GOLD PER MIL-G-45204 OVER .000050 MIN. NICKEL PER QQ-N-290
 ALL OTHER METAL PARTS: .000030 MIN. GOLD PER MIL-G-45204 OVER .000050 MIN. NICKEL PER QQ-N-290
- FOR USE WITH .141 SEMI-RIGID CABLE OR EQUIVALENT
- FOR CABLING PROCEDURE USE CAP 5-10 WITH TRIMMING DIMENSIONS SHOWN.

CABLE TRIMMING DIMENSIONS

PER ASME Y14.5M-1994 UNLESS OTHERWISE SPECIFIED: DIMENSIONS ARE IN INCHES (MM) TOLERANCES: DECIMALS .xx ± .01/0.254 .xxx ± .005/0.127 ANGLES ± 2°		Litton Winchester/Retconn 400 Park Road Watertown, Connecticut 06795	
CUSTOMER DRAWING		TITLE RDM RIGHT ANGLE RECEPTACLE	
DRAWN JWH	DATE 8/29/01	CHECKED <i>[Signature]</i>	DATE <i>[Date]</i>
APPROVED <i>[Signature]</i>	DATE <i>[Date]</i>	APPROVED <i>[Signature]</i>	DATE <i>[Date]</i>
A		203-510-1410G	SHT. 1 OF 1 REV. 1