

NOTES: UNLESS OTHERWISE SPECIFIED

1. MATERIAL SPECIFICATIONS:

BODY, NUT, BKHD BUSHING: BRASS PER ASTM B16  
 CONTACT: BERYLLIUM COPPER PER ASTM B196  
 INSULATOR: TEFLON PER ASTM D1710  
 CE INSULATOR: ULTEM1000 OR LCP PER ZENITE 6130L X BK010  
 LOCKWASHER: PHOSPHOR BRONZE PER ASTM B103

2. FINISH SPECIFICATIONS:

CENTER CONTACT: .000050 MIN GOLD PER ASTM B488 OVER .000080 MIN NICKEL PER AMS-QQ-N-290(ROHS).  
 BODY: .000015 MIN GOLD PER ASTM B488 OVER .000080 MIN NICKEL PER AMS-QQ-N-290(ROHS)  
 NUT, BKHD BUSH, LOCKWASHER: .000100 MIN NICKEL PER AMS-QQ-N-290 OVER COPPER FLASH PER ASTM B734(ROSH).

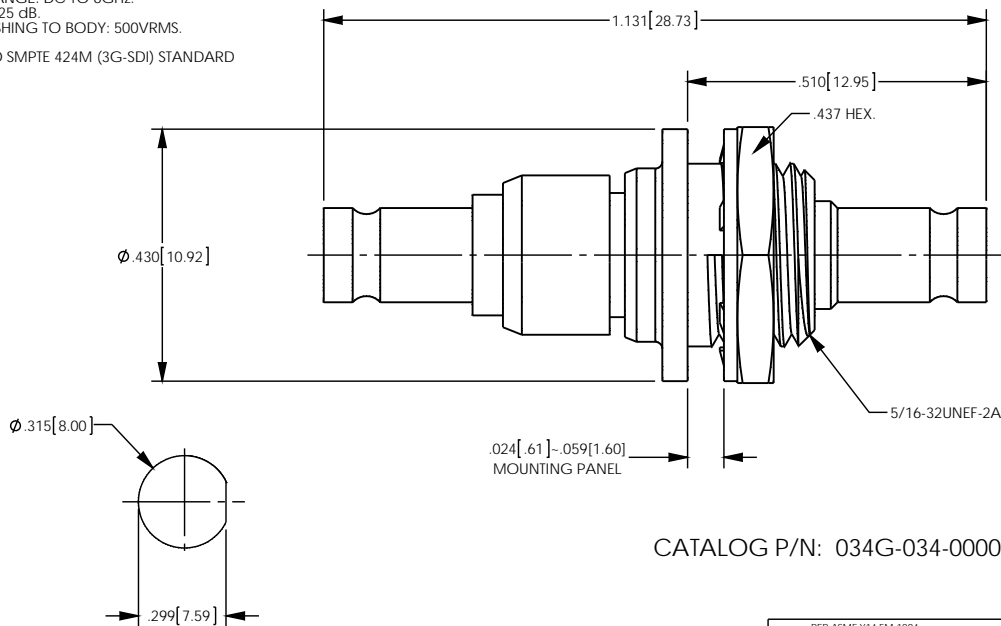
3. LOCKWASHER, NUT SHIPPED LOOSE.

4. ELECTRICAL SPECIFICATIONS:

IMPEDANCE: 75 OHM.  
 FREQUENCY RANGE: DC TO 6GHZ.  
 RETURN LOSS: -25 dB.  
 DWV BKHD BUSHING TO BODY: 500VRMS.

5. COMPLIANT TO SMPTE 424M (3G-SDI) STANDARD

REV	DESCRIPTION	BY DATE	APPD
C	REVISED PER ERD42797	TZ 07/06/12	CY



CATALOG P/N: 034G-034-00002H

RECOMMENDED MOUNTING HOLE

PER ASME Y14.5M-1994 UNLESS OTHERWISE SPECIFIED: DIMENSIONS ARE IN INCHES (MM) TOLERANCES: DECIMAL: XX (X.X) ± .01 (0.3) XXX (X.XXX) ± .005 (0.13) XXXX (X.XXXX) ± .XXX ANGLES: ± 2°      SCALE: 4:1		 by WINCHESTER Winchester Electronics Corporation 62 Barnes Industrial Road North Wallingford, Connecticut 06492	
CUSTOMER SALES DRAWING THIRD ANGLE 			
DRAWN CY	DATE 08/10/11	APPROVED DCam	DATE 08/11/11
APPROVED XXX	DATE XX/XX/XX	APPROVED XXX	DATE XX/XX/XX
A		SD034G-034-00002H	SHT OF REV 1 1 C